



DOOR NUMBER	QTY	OPENING		ACTUAL		MODEL	JAMB MOUNTING		LOCK	PANELS		SECTION NUMBER OPEN FOR GLASS														
		WIDTH	HEIGHT	WIDTH	HEIGHT		W	S		ANGLE	PBRKT	WIDE	HIGH	1	2	3	4	5	6	7	8					

JOB: \_\_\_\_\_

DISTR: \_\_\_\_\_

CONTR: \_\_\_\_\_

ARCH: \_\_\_\_\_

NR:2902509

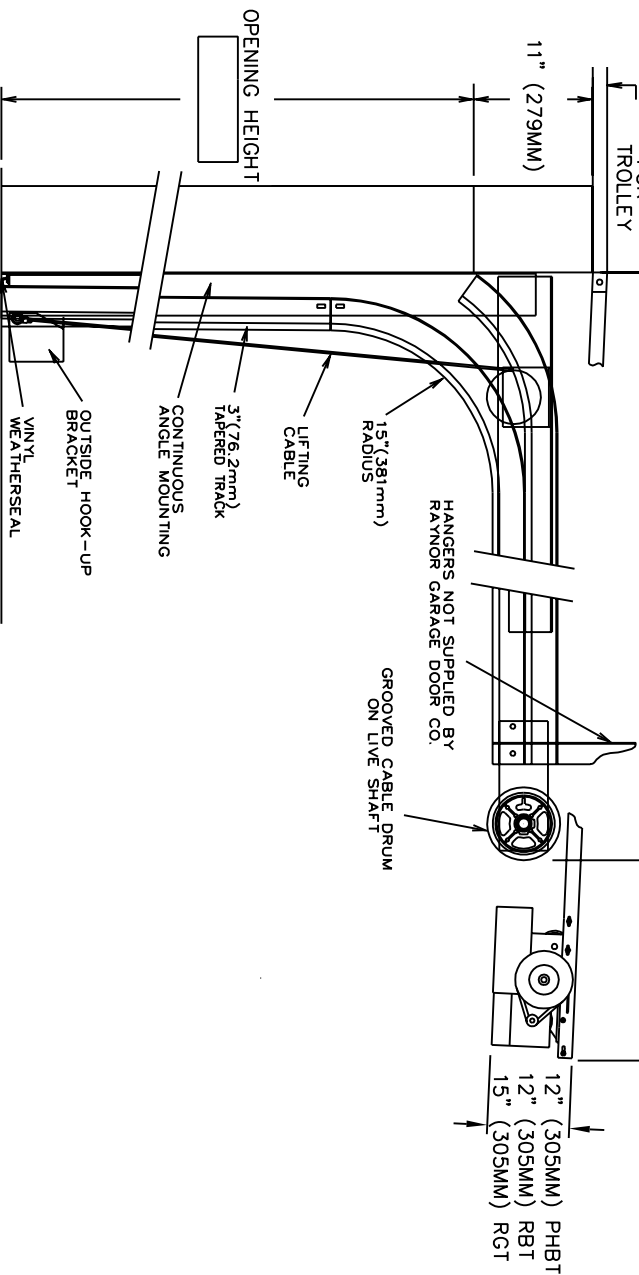
EVEN NUMBERED DOOR HT. + 3'-10" (1168MM) PHBT

EVEN NUMBERED DOOR HT. + 4'-6" (1168MM) RBT

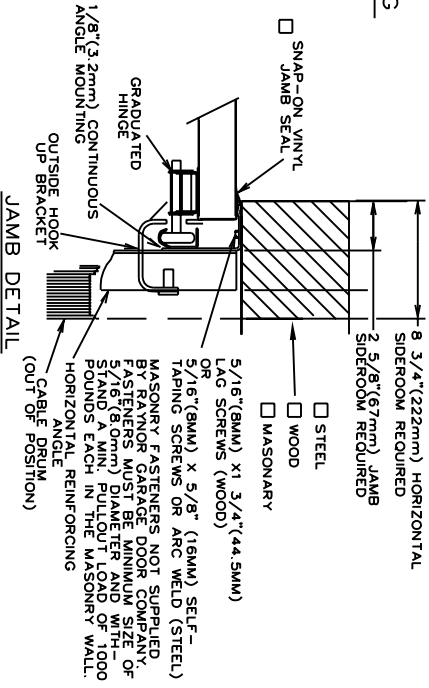
EVEN NUMBERED DOOR HT. + 5'-1" (1168MM) RGT

OPENING HEIGHT + 39" (990MM)

ADD 4" FOR TROLLEY



SECTION THRU OPENING



JAMB DETAIL

- RAYNOR POWERHOIST BASIC (PHBT) 1/2 H.P., 115 VOLT, SINGLE PHASE
- RAYNOR POWERHOIST STANDARD (RBT) --- H.P., --- VOLT, --- PHASE
- RAYNOR POWERHOIST OPTIMA (RGT) --- H.P., --- VOLT, --- PHASE
- WIRING TYPE-SR2 WIRING, MOMENTARY CONTACT OPEN/CLOSE/STOP, SAFETY EDGE TO REVERSE.
- WIRING TYPE-SPECIAL (NOT AVAILABLE WITH PHBT OPERATORS)
- SPECIFY SPECIAL WIRING TYPE -----
- PNEUMATIC SAFETY EDGE TO REVERSE
- ELECTRIC SAFETY EDGE TO REVERSE
- THRU-BEAM PHOTO EYES
- COIL OR CABLE TAKE UP REEL

ANSI/UL325 REQUIRES THE MOTOR OPERATOR BE MOUNTED A MINIMUM OF 8' ABOVE THE FLOOR OR GUARDING OF THE MOTOR OPERATOR TO PREVENT INJURY.(GUARDS BY OTHERS).

TRACKS- 3" (76.2mm) HOT-DIPPED GALVANIZED TRACK PER ASTM A-653 TYPE 304-20, CONTINUOUSLY ROLL-ON. HINGES AND BRACKETS MADE FROM GALVANIZED STEEL TRACK HARDWARE - HINGES AND BRACKETS MADE FROM GALVANIZED STEEL. ROLLERS SHALL HAVE TEN 5/16" (7.9mm) DIAMETER HANDLED STEEL BALLS PER ROLLER.

SPRING COUNTERBALANCE- HEAVY DUTY OIL-TEMPERED WIRE TORSION SPRINGS ON A CONTINUOUS BALL BEARING CROSS-HEADER SHAFT GALVANIZED AIRCRAFT TYPE LIFTING CABLES WITH MIN. SAFETY FACTOR OF 5 TO 1.