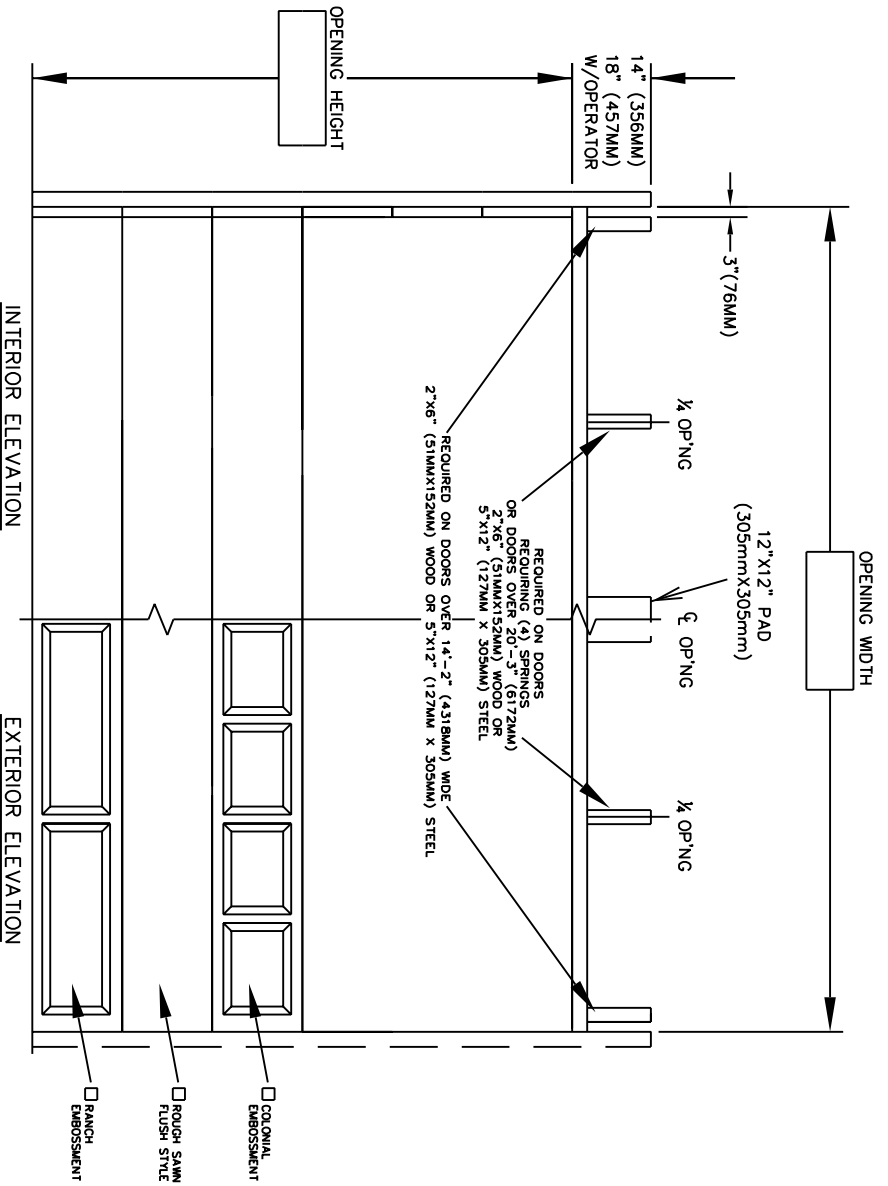


DOOR NUMBER	QTY	OPENING		ACTUAL		MODEL	JAMB W/S	MOUNTING ANGLE BRKT	LOCK WIDE	PANELS HIGH	SECTION NUMBER OPEN FOR GLASS									
		WIDTH	HEIGHT	WIDTH	HEIGHT						1	2	3	4	5	6	7	8		

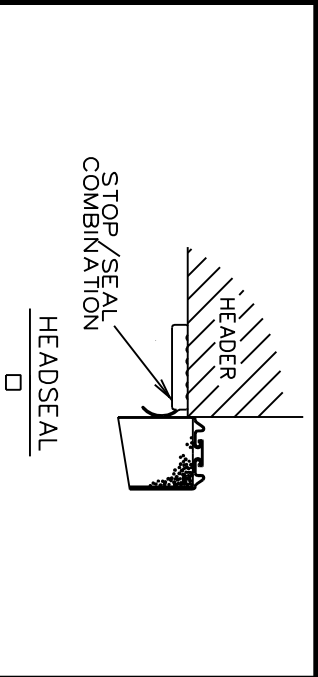
STYLEFORM OPTIMA



JOB:	
DISTR:	
CONTR:	
ARCH:	
NR:	2902508



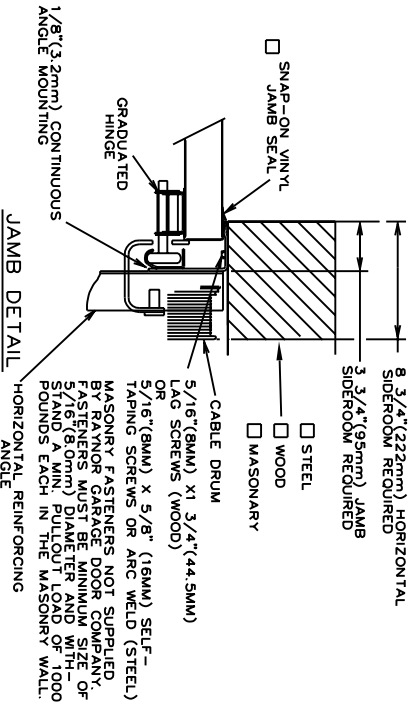
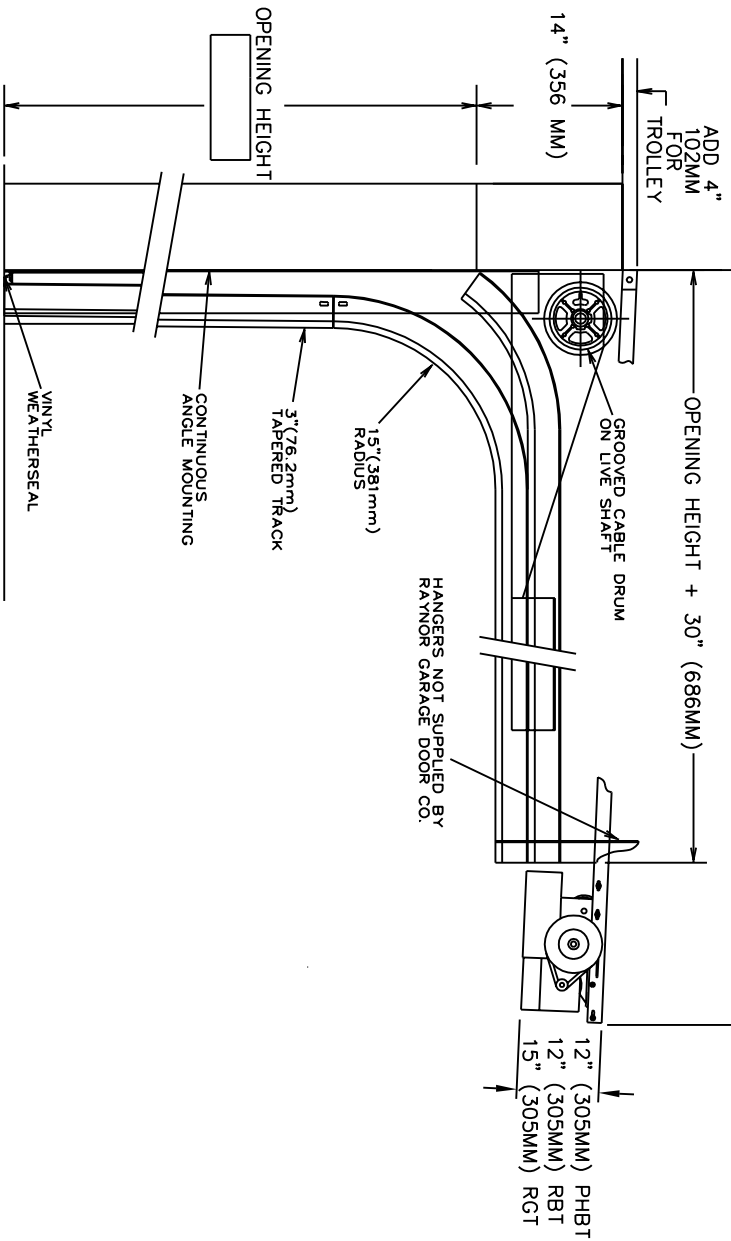
- DOORS SHALL BE STYLEFORM OPTIMA SECTIONAL OVERHEAD TYPE DOORS AS PROVIDED BY RAYNOR GARAGE DOORS.
- SECTIONS SHALL BE 2" THICK ROLL FORMED COMMERCIAL QUALITY, HOT DIPPED GALVANIZED, .0225" THICK STEEL PER ASTM A-924 AND A-653. SECTIONS MAY BE MADE FLUSH OR WITH EMBOSSED RAISED PANELS, BOTH THE INTERIOR AND THE EXTERIOR SKINS HAVE A ROUGH-SAWN WOODGRAIN TEXTURE. SECTIONS ARE MANUFACTURED WITH INSULATING CORE. END STUDS TO BE 1 3/8" DIA. (38.1MM).
- POLYSTYRENE INSULATING CORE - EACH SECTION IS FORMED FROM A 1 7/8" THICK POLYSTYRENE INSULATING CORE, COMPLETELY BONDED BETWEEN TWO STEEL SKINS, AND MECHANICALLY INTERLOCKED ALONG THEIR ENTIRE LENGTH. DOOR HAS A CALCULATED R-VALUE OF 10.25. DOOR HAS A CALCULATED U-VALUE OF .097.
- SECTION FINISH - THE OUTSIDE OF THE DOOR IS FINISH PAINTED WITH A (WHITE, ALMOND, BROWN, BRONZE-TONE, OR CLAY-TONE) BAKED ON POLYESTER FINISH. THE INSIDE OF THE DOOR IS FINISHED WITH A WHITE BAKED ON POLYESTER FINISH. DOORS CAN BE FIELD PAINTED WITH A SEMI GLOSS EXTERIOR LATEX PAINT.
- LOCKING - CREMONE TYPE BOLT ENGAGES SLOT IN TRACK, _____ HAND SIDE. FIVE PIN TUMBLER CYLINDER OUTSIDE - NIGHT LATCH INSIDE.
- LOCKING - SPRING LOADED SLIDE BOLT ENGAGES SLOT IN TRACK. OPERABLE FROM INSIDE ONLY - MAY BE MOUNTED EITHER SIDE
- LOCKING - OMIT LOCK.
- LOCKS SHOULD NOT BE SUPPLIED WITH AN ELECTRIC OPERATED DOOR WITHOUT A LOCK INTERLOCK SWITCH.



DOOR NUMBER	QTY	OPENING		ACTUAL		MODEL	JAMB MOUNTING		LOCK	PANELS		SECTION NUMBER OPEN FOR GLASS																																	
		WIDTH	HEIGHT	WIDTH	HEIGHT		W	S		M	ANGLE	PKT	WIDE	HIGH	1	2	3	4	5	6	7	8																							

JOB: **RAYNOR**
 CONTR: NR:2902508
 ARCH:

EVEN NUMBERED DOOR HT. + 3'-10" (1168MM) PHBT
 EVEN NUMBERED DOOR HT. + 4'-6" (1168MM) RBT
 EVEN NUMBERED DOOR HT. + 5'-1" (1168MM) RGT



- RAYNOR POWERHOIST BASIC (PHBT) 1/2 H.P., 115 VOLT, SINGLE PHASE
- RAYNOR POWERHOIST STANDARD (RBT) --- H.P., --- VOLT, --- PHASE
- RAYNOR POWERHOIST OPTIMA (RGT) --- H.P., --- VOLT, --- PHASE
- WIRING TYPE-SR2 WIRING, MOMENTARY CONTACT OPEN/CLOSE/STOP, SAFETY EDGE TO REVERSE.
- WIRING TYPE-SPECIAL (NOT AVAILABLE WITH PHBT OPERATORS)
- SPECIFY SPECIAL WIRING TYPE -----
- PNEUMATIC SAFETY EDGE TO REVERSE COIL CORD
- ELECTRIC SAFETY EDGE TO REVERSE CABLE TAKE UP REEL
- THRU-BEAM PHOTO EYES

ANSI/UL325 REQUIRES THE MOTOR OPERATOR BE MOUNTED A MINIMUM OF 8' ABOVE THE FLOOR OR GUARDING OF THE MOTOR OPERATOR TO PREVENT INJURY.(GUARDS BY OTHERS).

TRACKS - 3" (76.2mm) HOT-DIPPED GALVANIZED TRACK, PER ASTM A-653, TYPE 304 STAINLESS STEEL. SEALS AND FASTENERS SHALL BE MADE OF 304 STAINLESS STEEL. THE MINIMUM TRACK ANGLE SHALL BE 3-1/2"x6"x1/8" (88.9mmx152mmx3.2mm), TO BE ADEQUATELY REINFORCED WITH CONTINUOUS ANGLE. HANGERWARE - HINGES AND BRACKETS MADE FROM GALVANIZED STEEL. TRACK SHALL BE TEN 5/16" (.95mm) DIAMETER HANDHELD STEEL BALLS PER ROLLER.

SPRINGS - HEAVY DUTY OIL-TEMPERED WIRE TORSION SPRINGS ON A CONTINUOUS BALL BEARING CROSS-HEADER SHAFT GALVANIZED AIRCRAFT TYPE LIFTING CABLES WITH MIN. SAFETY FACTOR OF 5 TO 1.