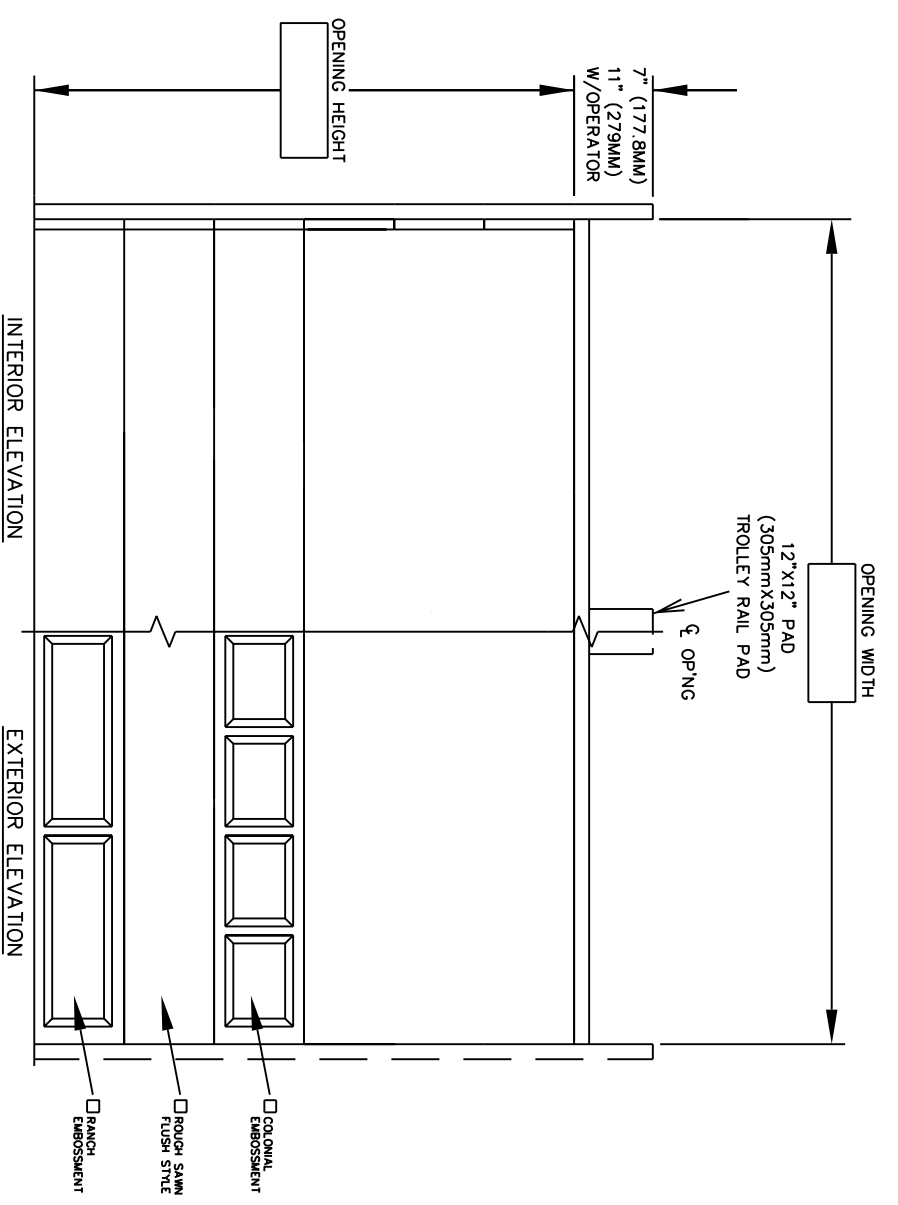


DOOR NUMBER	QTY	OPENING		ACTUAL		MODEL	JAMB W/S	MOUNTING ANGLE	BRKT	LOOK	PANELS WIDE	PANELS HIGH	SECTION NUMBER OPEN FOR GLASS																	
		WIDTH	HEIGHT	WIDTH	HEIGHT								1	2	3	4	5	6	7	8										

STYLEFORM OPTIMA



JOB:	
DIR:	
CONTR:	
ARCH:	
NR:2902504	

1) DOORS SHALL BE STYLEFORM OPTIMA SECTIONAL, OVERHEAD TYPE DOORS AS PROVIDED BY RAYNOR GARAGE DOORS. SECTIONS SHALL BE 2" THICK, ROLL FORMED COMMERCIAL QUALITY, HOT DIPPED GALVANIZED, .0225" THICK STEEL PER ASTM A-924 AND A-653. SECTIONS MAY BE MADE FLUSH OR WITH EMBOSSED RAISED PANELS. BOTH THE INTERIOR AND THE EXTERIOR SKINS HAVE A ROUGH-SAWN WOODGRAIN TEXTURE. SECTIONS ARE MANUFACTURED WITH ALUMINUM ANGLE, FINISH TO BE 18 GA. (.045 MIN.) BETWEEN SECTIONS. END STUDS TO BE 18 GA. (.045 MIN.)

POLYSTYRENE INSULATING CORE - EACH SECTION IS FORMED FROM A 1 7/8" THICK POLYSTYRENE INSULATING CORE, COMPLETELY BONDED BETWEEN TWO STEEL SKINS, AND MECHANICALLY INTERLOCKED ALONG THEIR ENTIRE LENGTH. DOOR HAS A CALCULATED R-VALUE OF 10.25. DOOR HAS A CALCULATED U-VALUE OF .097.

SECTION FINISH - THE OUTSIDE OF THE DOOR IS FINISH PAINTED WITH A (WHITE, ALMOND, BROWN, BRONZE-TONE, OR CLAY-TONE) BAKED ON POLYESTER FINISH. THE INSIDE OF THE DOOR IS FINISHED WITH A WHITE BAKED ON POLYESTER FINISH. DOORS MAY BE FIELD PAINTED WITH A SEMI GLOSS EXTERIOR LATEX PAINT.

- LOCKING - CREMONE TYPE BOLT ENGAGES SLOT IN TRACK, ----- HAND SIDE. FIVE PIN TUMBLER CYLINDER OUTSIDE - NIGHT LATCH INSIDE.
- LOCKING - SPRING LOADED SLIDE BOLT ENGAGES SLOT IN TRACK. OPERABLE FROM INSIDE ONLY - MAY BE MOUNTED EITHER SIDE
- LOCKING - OMIT LOCK.
- LOCKS SHOULD NOT BE SUPPLIED WITH AN ELECTRIC OPERATED DOOR WITHOUT A LOCK INTERLOCK SWITCH.

