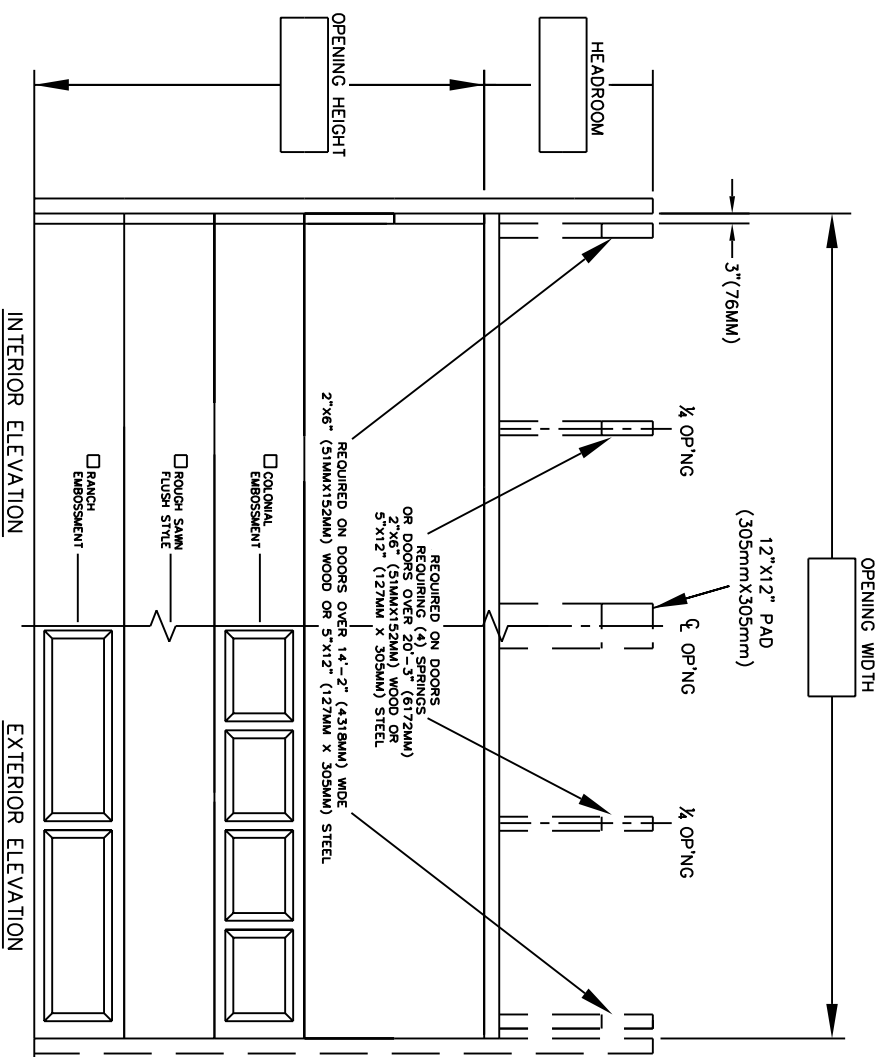


DOOR NUMBER	QTY	OPENING		ACTUAL		MODEL	JAMB		MOUNTING	LOOK	PANELS		SECTION NUMBER OPEN FOR GLASS																											
		WIDTH	HEIGHT	WIDTH	HEIGHT		W	S			M	ANGLE	BRKT	WIDE	HIGH	1	2	3	4	5	6	7	8																	

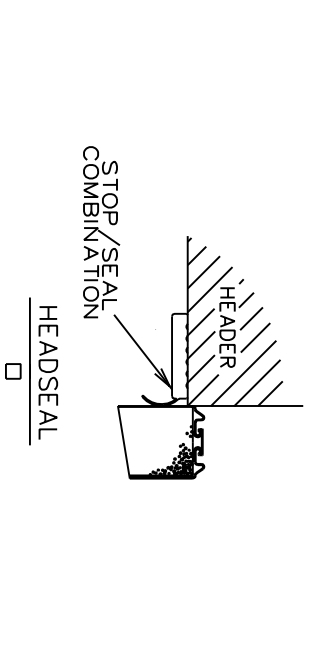
JOB:	
DISTR:	
CONTR:	
ARCH:	
	NR:2902501

STYLEFORM OPTIMA



1) DOORS SHALL BE STYLEFORM OPTIMA SECTIONAL OVERHEAD TYPE DOORS AS PROVIDED BY RAYNOR GARAGE DOORS. SECTIONS SHALL BE 2" THICK ROLL FORMED COMMERCIAL QUALITY, HOT DIPPED GALVANIZED, .0225" THICK STEEL PER ASTM A-924 AND A-653. SECTIONS MAY BE MADE FLUSH OR WITH EMBOSSED RAISED PANELS. BOTH THE INTERIOR AND THE EXTERIOR SKINS HAVE A ROUGH-SAWN WOODGRAIN TEXTURE. SECTIONS ARE MANUFACTURED WITH POLYSTYRENE INSULATING CORE AND MECHANICALLY BONDED BETWEEN TWO STEEL SKINS, AND CALCULATED R-VALUE OF 10.25. DOOR HAS A CALCULATED U-VALUE OF .097.

- SECTION FINISH - THE OUTSIDE OF THE DOOR IS FINISH PAINTED WITH A (WHITE, ALMOND, BROWN, BRONZE-TONE, OR CLAY-TONE) BAKED ON POLYESTER FINISH. THE INSIDE OF THE DOOR IS FINISHED WITH A WHITE BAKED ON POLYESTER FINISH. DOORS SHANT BE FIELD PAINTED WITH A SEMI GLOSS EXTERIOR LATEX PAINT.
- LOCKING - CREMONE TYPE BOLT ENGAGES SLOT IN TRACK, ----- HAND SIDE. FIVE PIN TUMBLER CYLINDER SLIDE BOLT ENGAGES SLOT IN TRACK.
- LOCKING - SPRING LOADED SLIDE BOLT ENGAGES SLOT IN TRACK. OPERABLE FROM INSIDE ONLY - MAY BE MOUNTED EITHER SIDE
- LOCKING - OMIT LOCK.
- LOCKS SHOULD NOT BE SUPPLIED WITH AN ELECTRIC OPERATED DOOR WITHOUT A LOCK INTERLOCK SWITCH.



DOOR NUMBER	QTY	OPENING		ACTUAL		MODEL	JAMB MOUNTING		LOCK	PANELS WIDE	SECTION NUMBER OPEN FOR GLASS											
		WIDTH	HEIGHT	WIDTH	HEIGHT		W	S			1	2	3	4	5	6	7	8				

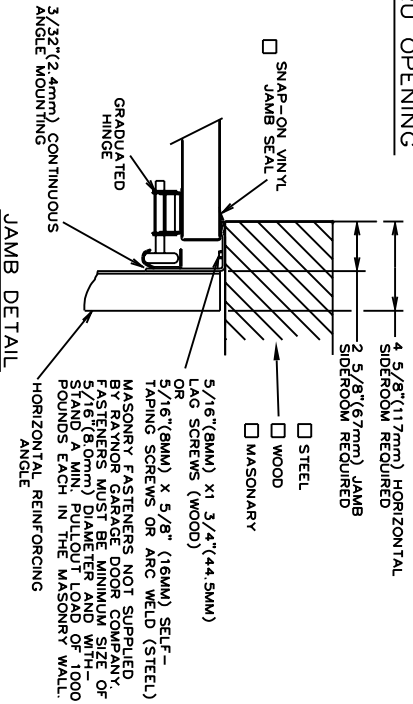
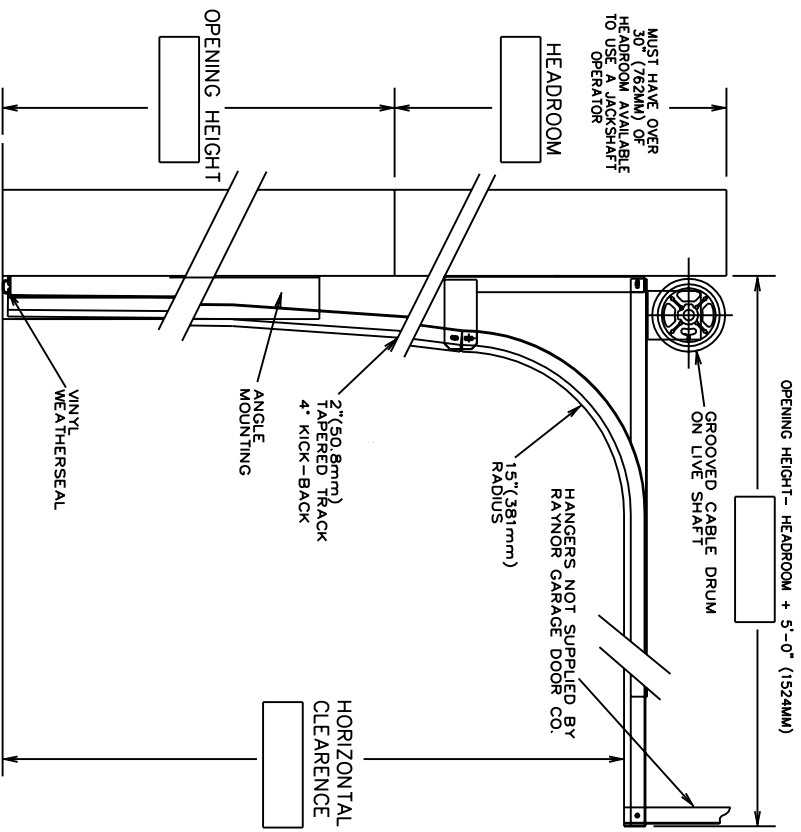
JOB: **RAYNOR**

DISTR: _____

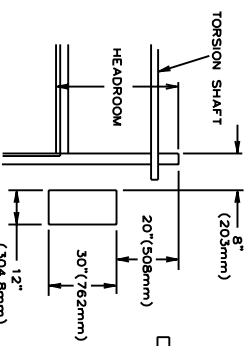
CONTR: _____

ARCH: _____

NR:2902501



- TRACKS - 2" (50.8mm) HOT-DIPPED GALVANIZED TRACK. PER ASTM A-653. TO BE ANGLE MOUNTED AND FULLY ADJUSTABLE FOR SEATING DOOR TO BE ABLE TO ADJUST TO BE ANGLE MOUNTED TRACK TO BE ADDITIONAL REINFORCED WITH CONTINUOUS ANGLE.
- HARDWARE - HINGES AND BRACKETS MADE FROM GALVANIZED STEEL. TRACK ROLLERS SHALL HAVE TEN 1/4" (6.4mm) DIAMETER HARDENED STEEL BALLS PER ROLLER.
- SPRING COUNTERBALANCE - HEAVY DUTY OIL-TEMPERED WIRE TORSION SPRINGS ON A CONTINUOUS BALL BEARING CROSS-HEADER SHAFT CALVA-NIZED AIRCRAFT TYPE LIFTING CABLES WITH MIN. SAFETY FACTOR OF 5 TO 1.
- ANSI/UL325 REQUIRES THE MOTOR OPERATOR BE MOUNTED A MINIMUM OF 8' ABOVE THE FLOOR OR GUARDING OF THE MOTOR OPERATOR TO PREVENT INJURY. (GUARDS BY OTHERS).
- RAYNOR POWERHOIST BASIC (PHBR) 1/2 H.P., 115 VOLT, SINGLE PHASE
 - RAYNOR POWERHOIST BASIC (PHBR) 1/2 H.P., 115 VOLT, SINGLE PHASE
 - RAYNOR POWERHOIST BASIC (PHBU) 1/2 H.P., 115 VOLT, SINGLE PHASE
 - RAYNOR POWERHOIST BASIC (PHBJ) 1/2 H.P., 115 VOLT, SINGLE PHASE
 - RAYNOR POWERHOIST STANDARD (RBJ) ___ H.P., ___ VOLT, ___ PHASE
 - RAYNOR POWERHOIST STANDARD (RBJH) ___ H.P., ___ VOLT, ___ PHASE
 - RAYNOR POWERHOIST OPTIMA (RGH) ___ H.P., ___ VOLT, ___ PHASE
 - WIRING TYPE-SR2 WIRING. MOMENTARY CONTACT OPEN/CLOSE/STOP. SAFETY EDGE TO REVERSE.
 - WIRING TYPE-SPECIAL (NOT AVAILABLE WITH PHBT OPERATORS)
 - SPECIFY SPECIAL WIRING TYPE _____
 - PNEUMATIC SAFETY EDGE TO REVERSE _____
 - ELECTRICAL SAFETY EDGE TO REVERSE _____
 - THRU-BEAM PHOTO EYES _____
 - COIL CORD _____
 - CABLE TAKE UP REEL _____



RAYNOR DOES NOT RECOMMEND THE USE OF A JACKSHAFT OPERATOR ON DOORS WITH LESS THAN OR EQUAL TO 30" (762MM) OF HEADROOM. RAYNOR RECOMMENDS THE USE OF A TROLLEY TYPE OPERATOR IN THESE SITUATIONS.

JACKSHAFT MOUNTING DETAIL
POSITION # ----- REQUIRED
(TYPICAL DIMENSIONS)