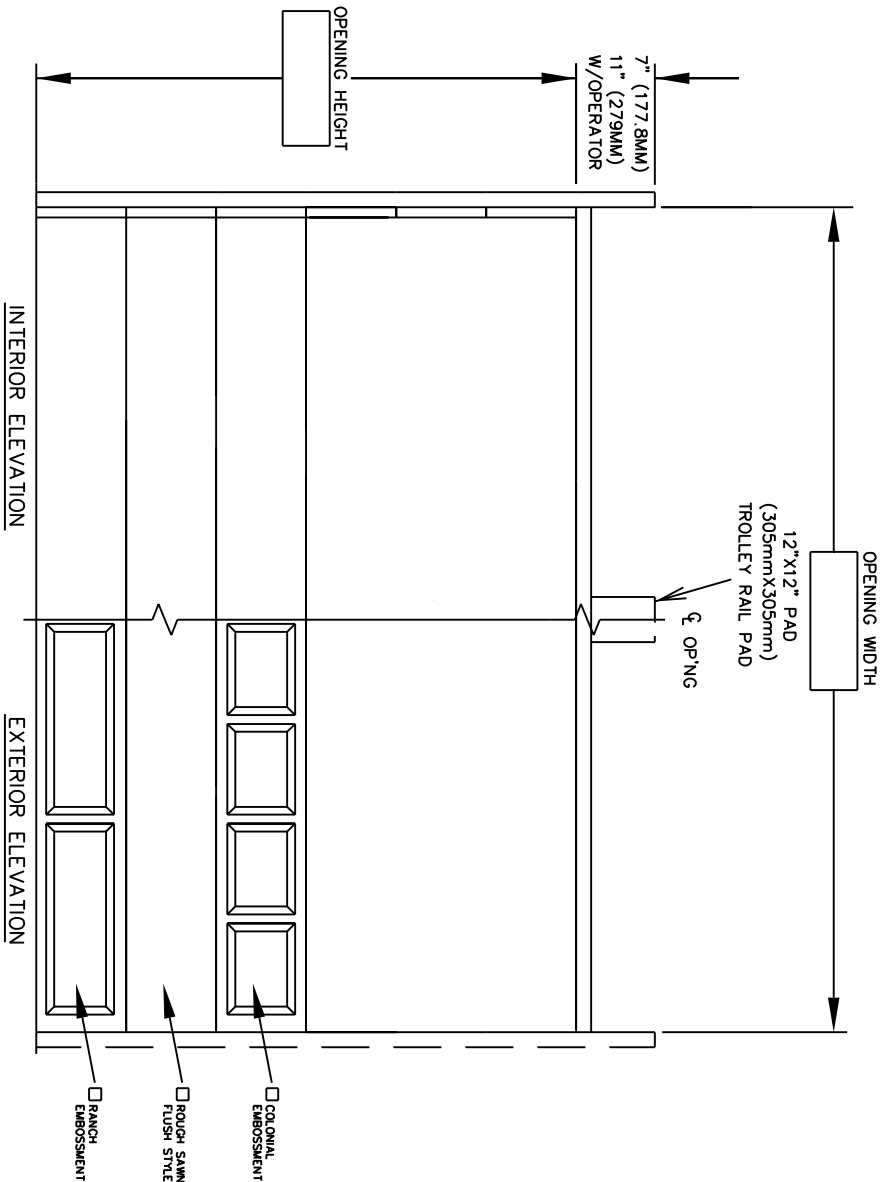


| DOOR NUMBER | QTY | OPENING |        | ACTUAL |        | MODEL | JAMB | MOUNTING | LOCK | PANELS |   | SECTION NUMBER | OPEN FOR GLASS |
|-------------|-----|---------|--------|--------|--------|-------|------|----------|------|--------|---|----------------|----------------|
|             |     | WIDTH   | HEIGHT | WIDTH  | HEIGHT |       |      |          |      | W      | H |                |                |
|             |     |         |        |        |        |       |      |          |      |        |   | 1              | 2              |
|             |     |         |        |        |        |       |      |          |      |        |   | 3              | 4              |
|             |     |         |        |        |        |       |      |          |      |        |   | 5              | 6              |
|             |     |         |        |        |        |       |      |          |      |        |   | 7              | 8              |

# STYLEFORM OPTIMA



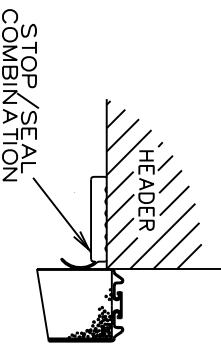
SHEET 1 OF 2

|        |            |
|--------|------------|
| JOB:   | NR:2902499 |
| DISTR: |            |
| CONTR: |            |
| ARCH:  |            |

1) DOORS SHALL BE STYLEFORM OPTIMA SECTIONAL OVERHEAD TYPE DOORS AS PROVIDED BY RAYNOR GARAGE DOORS. SECTIONS SHALL BE 2" THICK ROLL FORMED COMMERCIAL QUALITY, HOT DIPPED GALVANIZED, .0225" THICK STEEL PER ASTM A-924 AND A-653. SECTIONS MAY BE MADE FLUSH OR WITH EMBOSSED RAISED PANELS BOTH THE INTERIOR AND THE EXTERIOR SKINS HAVE A ROUGH-SAWN WOODGRAIN TEXTURE. SECTIONS ARE MANUFACTURED WITH FULLY HEATED AND FINISHED END STILES (TO BE 18 GA.(1045 MIN.) BETWEEN SECTIONS. END STILES TO BE 1 7/8" WIDE.

POLYSTYRENE INSULATING CORE - EACH SECTION IS FORMED FROM A 1 7/8" THICK POLYSTYRENE INSULATING CORE, COMPLETELY BONDED BETWEEN TWO STEEL SKINS, AND MECHANICALLY INTERLOCKED ALONG THEIR ENTIRE LENGTH. DOOR HAS A CALCULATED R-VALUE OF 10.25. DOOR HAS A CALCULATED U-VALUE OF .097.

- SECTION FINISH - THE OUTSIDE OF THE DOOR IS FINISH PAINTED WITH A (WHITE, ALMOND, BROWN, BRONZE-TONE, OR CLAY-TONE) BAKED ON POLYESTER FINISH. THE INSIDE OF THE DOOR IS FINISHED WITH A WHITE BAKED ON POLYESTER FINISH. DOORS MAY BE FIELD PAINTED WITH A SEMI GLOSS EXTERIOR LATEX PAINT.
- LOCKING - CREMONE TYPE BOLT ENGAGES SLOT IN TRACK, ----- HAND SIDE. FIVE PIN TUMBLER CYLINDER OUTSIDE - NIGHT LATCH INSIDE.
  - LOCKING - SPRING LOADED SLIDE BOLT ENGAGES SLOT IN TRACK, OPERABLE FROM INSIDE ONLY - MAY BE MOUNTED EITHER SIDE
  - LOCKING - OMIT LOCK.
  - LOCKS SHOULD NOT BE SUPPLIED WITH AN ELECTRIC OPERATED DOOR WITHOUT A LOCK INTERLOCK SWITCH.



HEADSEAL

| DOOR NUMBER | QTY | OPENING WIDTH | ACTUAL WIDTH | OPENING HEIGHT | ACTUAL HEIGHT | MODEL | JAMB W | MOUNTING ANGLE | LOCK | PANELS WIDE | PANELS HIGH | SECTION NUMBER OPEN FOR GLASS |   |   |   |   |   |   |   |  |
|-------------|-----|---------------|--------------|----------------|---------------|-------|--------|----------------|------|-------------|-------------|-------------------------------|---|---|---|---|---|---|---|--|
|             |     |               |              |                |               |       |        |                |      |             |             | 1                             | 2 | 3 | 4 | 5 | 6 | 7 | 8 |  |
|             |     |               |              |                |               |       |        |                |      |             |             |                               |   |   |   |   |   |   |   |  |
|             |     |               |              |                |               |       |        |                |      |             |             |                               |   |   |   |   |   |   |   |  |

|        |            |
|--------|------------|
| JOB:   |            |
| DISTR: |            |
| CONTR: |            |
| ARCH:  |            |
|        | NR:2902499 |



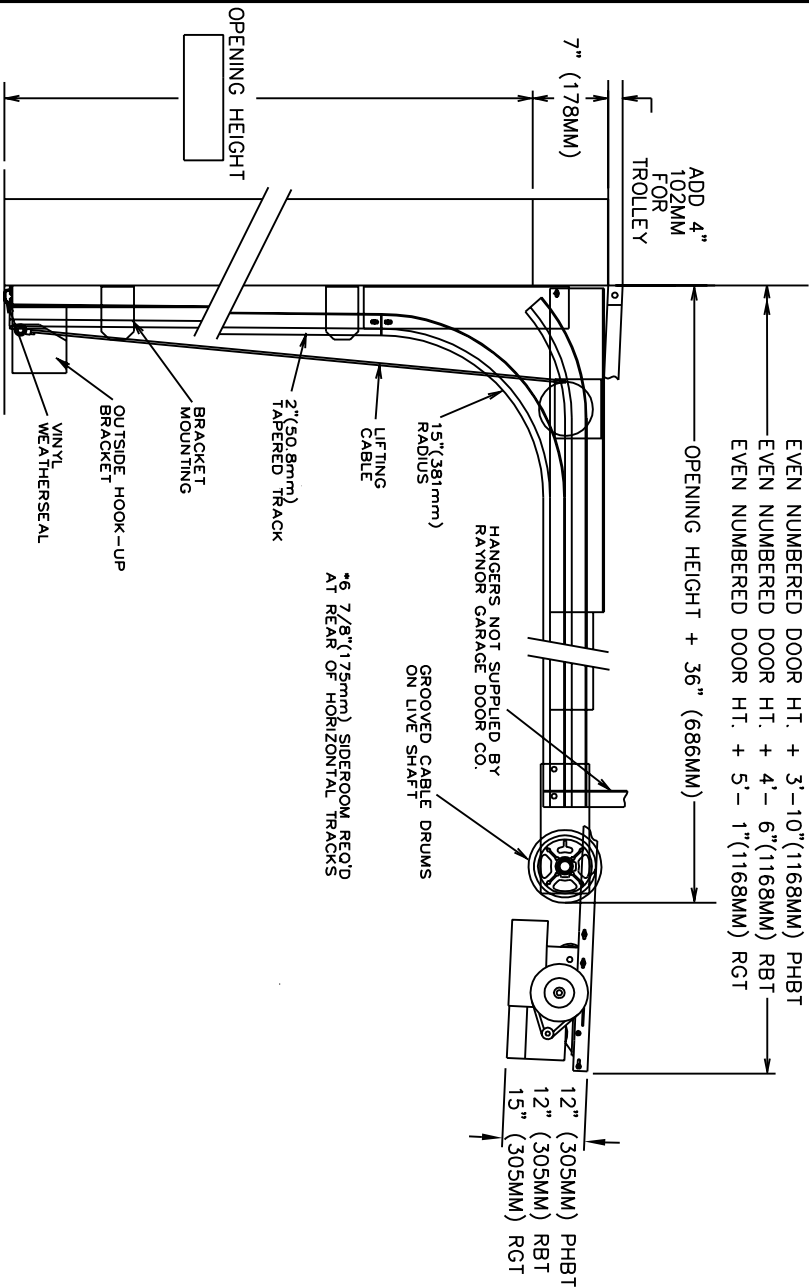
EVEN NUMBERED DOOR HT. + 3'-10" (1168MM) PHBT  
 EVEN NUMBERED DOOR HT. + 4'-6" (1168MM) RBT  
 EVEN NUMBERED DOOR HT. + 5'-1" (1168MM) RGT

ADD 4" FOR TROLLEY

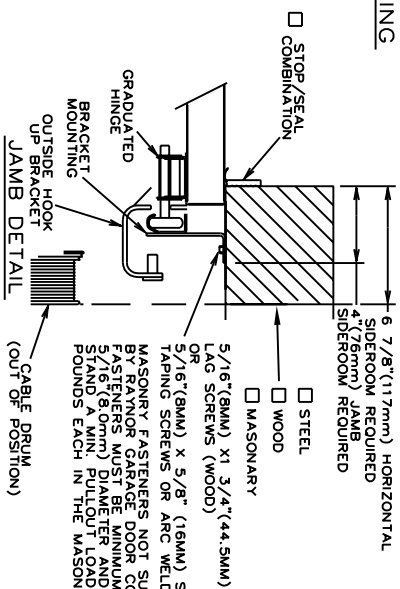
7" (178MM)

HANGERS NOT SUPPLIED BY RAYNOR GARAGE DOOR CO.

GROOVED CABLE DRUMS ON LIVE SHAFT



SECTION THRU OPENING



MASONRY FASTENERS NOT SUPPLIED BY RAYNOR GARAGE DOOR COMPANY. FASTENERS MUST BE MINIMUM SIZE OF 5/16" (8.0mm) DIAMETER AND WITH STAND A MIN. PULLOUT LOAD OF 1000 POUNDS EACH IN THE MASONRY WALL.

TRACKS - 2" (50.8mm) HOT-DIPPED GALVANIZED TRACK PER ASTM A-653. TRACKS TO BE FULLY SECURED TO JAMB HORIZONTAL TRACK TO BE ADEQUATELY REINFORCED WITH CONTINUOUS ANGLE.  
 HARDWARE - HINGES AND BRACKETS MADE FROM GALVANIZED STEEL. TRACK ROLLERS SHALL HAVE TEN 1/4" (6.4mm) DIAMETER HARDENED STEEL BALLS PER ROLLER.  
 SPRING COUNTERBALANCE - HEAVY DUTY OIL-TEMPERED WIRE TORSION SPRINGS ON A CONTINUOUS BALL BEARING CROSS-HEADER SHAFT GALVANIZED AIRCRAFT TYPE LIFTING CABLES WITH MIN. SAFETY FACTOR OF 5 TO 1.

ANSI/UL 325 REQUIRES THE MOTOR OPERATOR BE MOUNTED A MINIMUM OF 8' ABOVE THE FLOOR OR GUARDING OF THE MOTOR OPERATOR TO PREVENT INJURY. (GUARDS BY OTHERS).

- RAYNOR POWERHOIST BASIC (PHBT) 1/2 H.P., 115 VOLT, SINGLE PHASE
- RAYNOR POWERHOIST STANDARD (RBT) --- H.P., --- VOLT, --- PHASE
- RAYNOR POWERHOIST OPTIMA (RGT) --- H.P., --- VOLT, --- PHASE
- WIRING TYPE - SR2 WIRING. MOMENTARY CONTACT OPEN/CLOSE/STOP. SAFETY EDGE TO REVERSE.
- WIRING TYPE - SPECIAL (NOT AVAILABLE WITH PHBT OPERATORS)
- SPECIFY SPECIAL WIRING TYPE -----
- PNEUMATIC SAFETY EDGE TO REVERSE  COIL CORD
- ELECTRIC SAFETY EDGE TO REVERSE  CABLE TAKE UP REEL
- THRU-BEAM PHOTO EYES