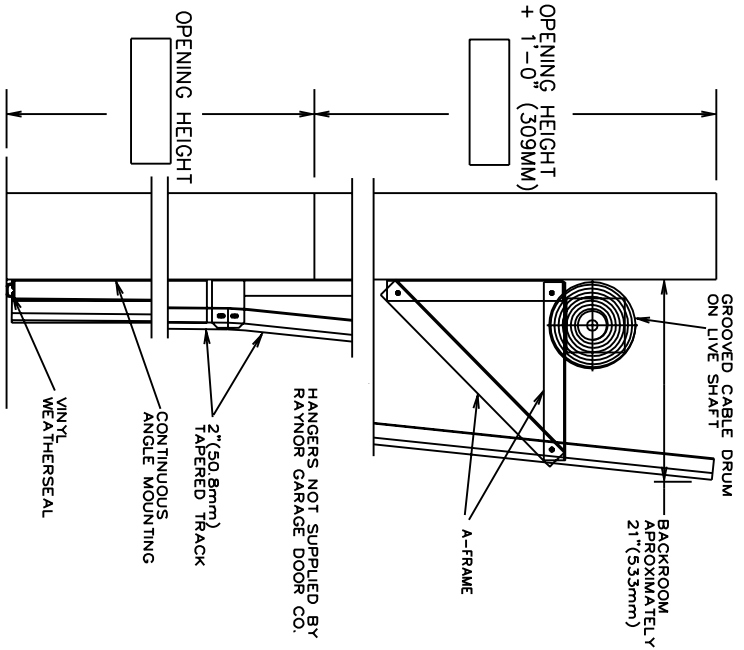
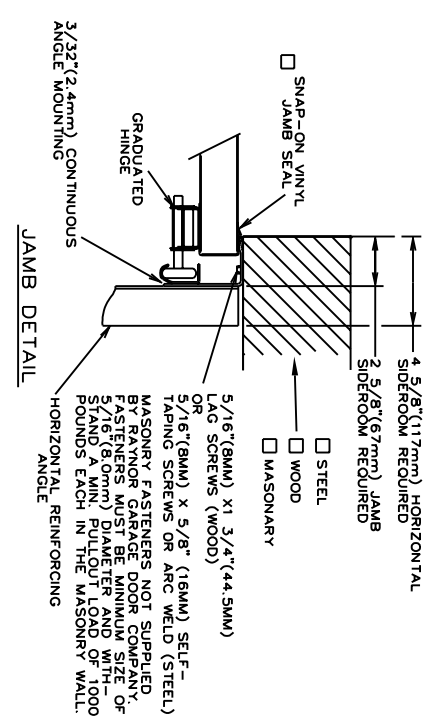


DOOR NUMBER	QTY	OPENING		ACTUAL		MODEL	JAMB MOUNTING		LOCK	PANELS		SECTION NUMBER OPEN FOR GLASS											
		WIDTH	HEIGHT	WIDTH	HEIGHT		W	M		ANGLE	PKT	WIDE	HIGH	1	2	3	4	5	6	7	8		



ANSI/JL1 325 REQUIRES THE MOTOR OPERATOR BE MOUNTED A MINIMUM OF 8" ABOVE THE FLOOR OR GUARDING OF THE MOTOR OPERATOR TO PREVENT INJURY. (GUARDS BY OTHERS).



JOB: _____

DISTR: _____

CONTR: _____

ARCH: _____

NR:2901780

RAYNOR

TRACKS - 2" (50.8mm) HOT-DIPPED GALVANIZED TRACK. PER ASTM A-653, TO BE ANGLE MOUNTED AND FULLY ADJUSTABLE FOR SEALING DOOR TO JAMB. HORIZONTAL TRACK TO BE ADEQUATELY REINFORCED WITH CONTINUOUS ANGLE.

HARDWARE - HINGES AND BRACKETS MADE FROM GALVANIZED STEEL. TRACK ROLLERS SHALL HAVE TEN 1/4" (6.4mm) DIAMETER HARDENED STEEL BALLS PER ROLLER.

SPRING COUNTERBALANCE - HEAVY DUTY OIL-TEMPERED WIRE TORSION SPRINGS ON A CONTINUOUS BALL BEARING GROSS-THEAD SHAFT GALVANIZED AIRCRAFT TYPE LIFTING CABLES WITH MIN. SAFETY FACTOR OF 5 TO 1.

LOCKING - CREMONE TYPE BOLT ENGAGES SLOT IN TRACK. ----- HAND SIDE. FIVE PIN TUMBLER CYLINDER OUTSIDE - NIGHT LATCH INSIDE.

LOCKING - SPRING LOADED SLIDE BOLT ENGAGES SLOT IN TRACK. OPERABLE FROM INSIDE ONLY - MAY BE MOUNTED EITHER SIDE

LOCKING - OMIT LOCK.

LOCKS SHOULD NOT BE SUPPLIED WITH AN ELECTRIC OPERATED DOOR WITHOUT A LOCK INTERLOCK SWITCH.

- RAYNOR POWERHOIST BASIC (PHBAR) 1/2 H.P., 115 VOLT, SINGLE PHASE
- RAYNOR POWERHOIST BASIC (PHBHR) 1/2 H.P., 115 VOLT, SINGLE PHASE
- RAYNOR POWERHOIST BASIC (PHBU) 1/2 H.P., 115 VOLT, SINGLE PHASE
- RAYNOR POWERHOIST BASIC (PHBHU) 1/2 H.P., 115 VOLT, SINGLE PHASE
- RAYNOR POWERHOIST STANDARD (RBU) ----- H.P., ----- VOLT, ----- PHASE
- RAYNOR POWERHOIST STANDARD (RBHU) ----- H.P., ----- VOLT, ----- PHASE
- RAYNOR POWERHOIST OPTIMA (RGH) ----- H.P., ----- VOLT, ----- PHASE
- WIRING TYPE - SR2 WIRING. MOMENTARY CONTACT OPEN/CLOSE/STOP. SAFETY EDGE TO REVERSE.
- WIRING TYPE - SPECIAL (NOT AVAILABLE WITH PHBT OPERATORS)
- SPECIAL WIRING TYPE -----
- PNEUMATIC SAFETY EDGE TO REVERSE COIL CORD
- ELECTRICAL SAFETY EDGE TO REVERSE CABLE TAKE UP REEL
- THRU-BEAM PHOTO EYES

JACKSHAFT MOUNTING DETAIL
POSITION # ----- REQUIRED (TYPICAL DIMENSIONS)

TORSION SHAFT (203mm) 8" (203mm)

HEADROOM 20" (508mm)

30" (762mm)

12" (304.8mm)

RAYNOR DOES NOT RECOMMEND THE USE OF A JACKSHAFT OPERATOR ON DOORS WITH LESS THAN OR EQUAL TO 30" (762MM) OF HEADROOM. RAYNOR RECOMMENDS THE USE OF A TROLLEY TYPE OPERATOR IN THESE SITUATIONS.