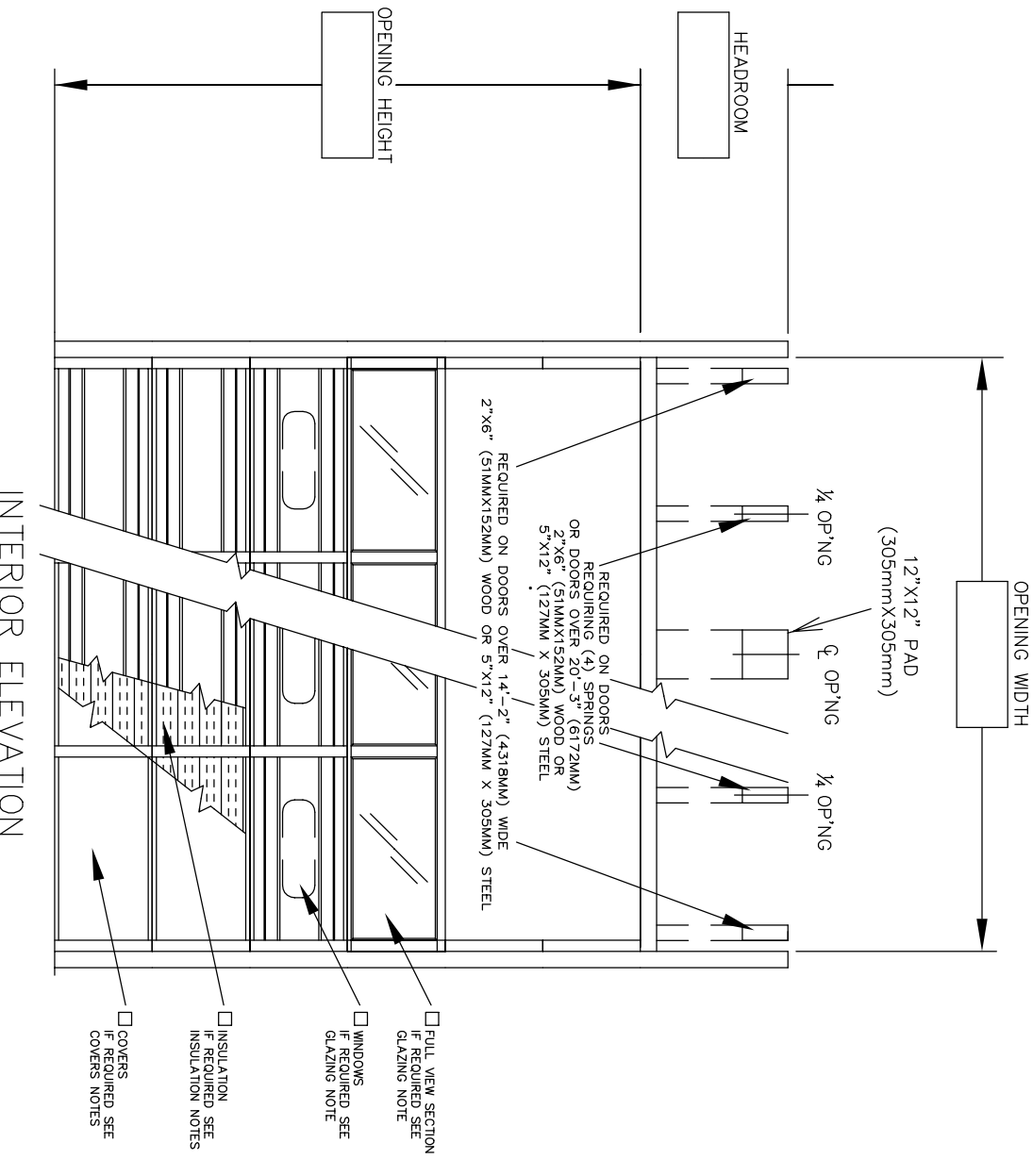


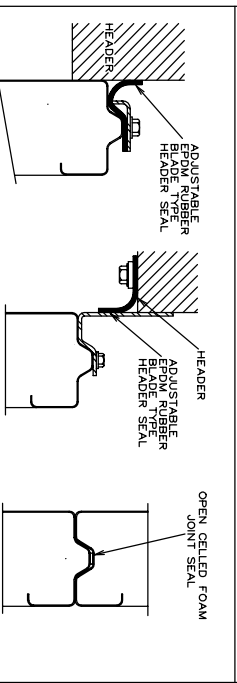
DOOR NUMBER	QTY	OPENING		ACTUAL		MODEL	JAMB	MOUNTING	LOOK	PANELS		SECTION NUMBER	OPEN FOR GLASS				
		WIDTH	HEIGHT	WIDTH	HEIGHT					W	H						
										1	2	3	4	5	6	7	8

JOB:	
CONTR.:	
ARCH:	NR:2901779

STEEL FORM STANDARD



- 1) DOORS SHALL BE STEEL SECTIONAL OVERHEAD TYPE RAYNOR SERIES (S24 OR S20) AS MANUFACTURED BY RAYNOR GARAGE DOOR CO. DOOR SECTIONS - SECTIONS SHALL BE 2" (50.8MM) THICK, ROLL-FORMED FORM (24 OR 20) GA. COMMERCIAL QUALITY HOT DIPPED GALVANIZED STEEL PER ASTM A-924 AND A-653. SECTIONS TO HAVE A SMOOTH EXTERIOR SURFACE WITH TWO DEEP RIBS AND FOUR PENCIL GROOVES FOR ADDED STRENGTH, ROLL-FORMED TONGUE AND GROOVE JOINT BETWEEN SECTIONS FOR WEATHER-TITE CLOSURE. 13 GA. END STILES AND 16 GA. CENTER STILES. RIVETED TO EXTERIOR SURFACE WITH STAINLESS STEEL RIVETS AND RESISTANCE WELDED TO INTERIOR RAIL, SECTION PANEL SEALED AT END STILES WITH 1/4" (6.4MM) THICK POLYETHYLENE FOAM, FINISH- DOOR EXTERIOR TO HAVE FINISH COAT OF BAKED ON POLYESTER (WHITE, BROWN, OR SEPIA) (BROWN & SEPIA AVAILABLE ON S24 ONLY) OVER AN EPOXY PRIMER. INTERIOR TO HAVE BAKED ON GREY POLYESTER ENAMEL. MAY BE FIELD PAINTED TO MATCH STRUCTURE.
- INSULATION--SECTIONS ARE INSULATED WITH 1 3/8" (34.9mm) THICK RIGID EXPANDED POLYSTYRENE INSULATION WITH FLAME RETARDANT ADDITIVE. INSULATION MEETS UL TEST ASTM-84 WITH MAXIMUM FLAME SPREADOF 25. "U" VALUE IS .130. "R" VALUE IS 7.70.
- INSULATION--SECTIONS ARE INSULATED WITH 1 3/4" (44.5mm) SEMI-RIGID FIBERGLASS. INSULATION MEETS UL TEST ASTM-84 AND FEDERAL SPECIFICATION HH-1-521E TYPE 1. "U" VALUE IS .132. "R" VALUE IS 7.57.
- INSULATION--SECTIONS ARE INSULATED WITH 1 3/8" (34.9mm) THICK RIGID EXPANDED POLYSTYRENE INSULATION, MEETS UL 723 TEST ASTM-84 WITH MAXIMUM FLAME SPREAD OF 25. INSULATION IMPACT POLYSTYRENE. R-VALUE= 7.70AND U-VALUE= 0.130. (COVERS NOT REQUIRED)
- SECTIONS FURNISHED WITH (24, 20) GAUGE WHITE BAKED ON ENAMEL PAINTED COVERS, FITTING BETWEEN VERTICAL MULLIONS AND HORIZONTAL RAILS ON ALL SECTIONS.
- SECTIONS FURNISHED WITH (26, 24, 20) GAUGE GREY BAKED ON ENAMEL PAINTED COVERS, FITTING BETWEEN VERTICAL MULLIONS AND HORIZONTAL RAILS ON ALL SECTIONS.
- SECTIONS, FURNISHED WITH 1/8" (3.2mm) PRIME PAINTED HARDBOARD COVERS, FITTING BETWEEN VERTICAL MULLIONS AND HORIZONTAL RAILS ON ALL SECTIONS. NOT RECOMMENDED FOR HIGH HUMIDITY APPLICATIONS.
- GLAZED SECTIONS--SECTIONS SHALL BE RAYNOR SERIES "UL" MADE FROM 6063T6 EXTRUDED ALUMINUM STILE AND RAIL CONSTRUCTION. GLASS ENCASED IN SOFT VINYL CHANNELS AND HELD IN PLACE WITH SNAP-IN EXTRUDED ALUMINUM RETAINER. FINISH--SECTIONS TO BE ENDURA COATED TO MATCH DOOR SECTIONS FULL VIEW GLAZING (AS SHOWN) (DSB OR DSBT) (DSB OR DSBT) GLAZING (AS SHOWN)-- 24"(610MM)x8"(203MM)x (1/8", 1/4", 5/8") RUBBER BY RAYNOR.



HEADER SEAL

HEADER SEAL

SECTION JOINT SEAL

DOOR NUMBER	QTY	OPENING		ACTUAL		MODEL	JAMB MOUNTING			LOCK	PANELS WIDE		SECTION NUMBER OPEN FOR GLASS								
		WIDTH	HEIGHT	WIDTH	HEIGHT		W	S	M		ANGLE	PBPKT	1	2	3	4	5	6	7	8	

JOB: _____

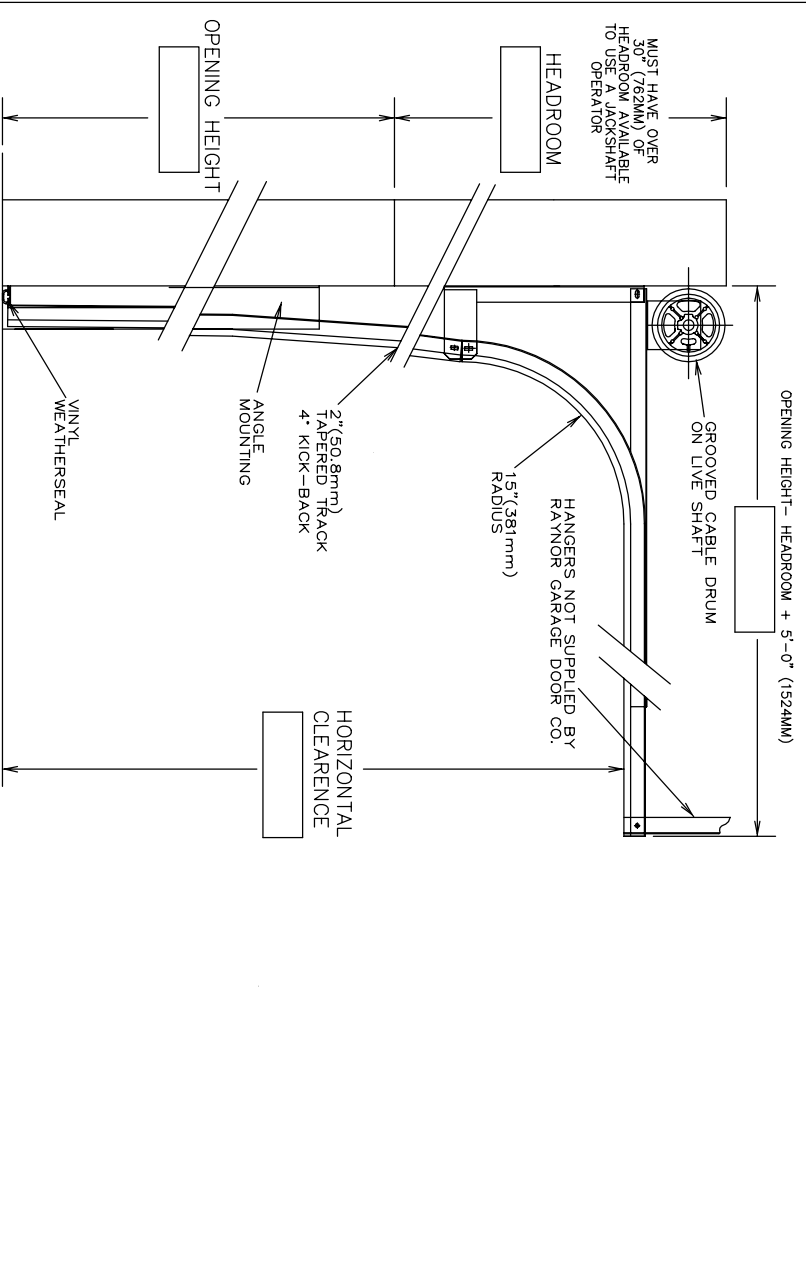
DISTR: _____

CONTR: _____

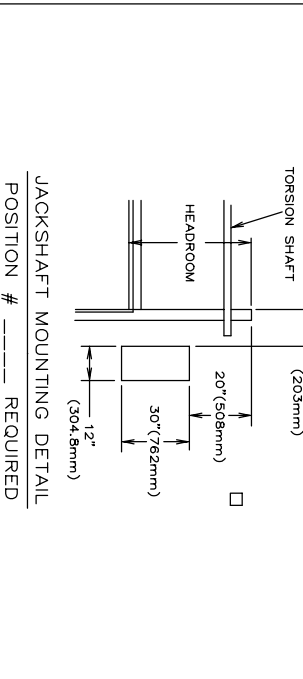
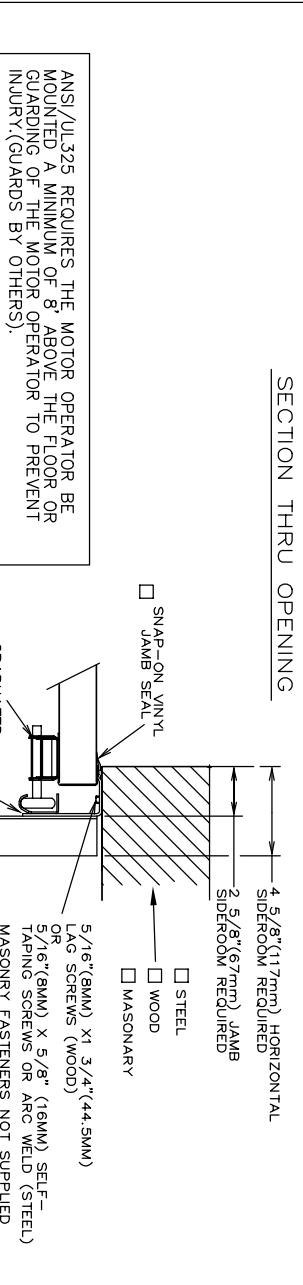
ARCH: _____

RAYNOR

NR:2901779



- TRACKS - 2" (50.8mm) HOT-DIPPED GALVANIZED TRACK, PER ASTM A-653, TO BE ANGLE MOUNTED AND FULLY ADJUSTABLE FOR SEALING DOOR TO JAMB. HORIZONTAL TRACK TO BE ADEQUATELY REINFORCED WITH CONTINUOUS ANGLE.
- HARDWARE - HINGES AND BRACKETS MADE FROM GALVANIZED STEEL. TRACK ROLLERS SHALL HAVE TEN 1/4" (6.4mm) DIAMETER HARDENED STEEL BALLS PER ROLLER.
- SPRINGS - COUNTERBALANCE - HEAVY DUTY OIL-TEMPERED WIRE TORSION SPRINGS ON A CONTINUOUS BALL BEARING CROSS-HEADER SHAFT GALVANIZED AIRCRAFT TYPE LIFTING CABLES WITH MIN. SAFETY FACTOR OF 5 TO 1.
- LOCKING - CREWONE TYPE BOLT ENGAGES SLOT IN TRACK, _____ HAND SIDE. FIVE PIN TUMBLER CYLINDER SLIDE BOLT ENGAGES SLOT IN TRACK.
 - LOCKING - SPRING LOADED SLIDE BOLT ENGAGES SLOT IN TRACK. OPERABLE FROM INSIDE ONLY - MAY BE MOUNTED EITHER SIDE.
 - LOCKING - OMIT LOCK.
 - LOCKS SHOULD NOT BE SUPPLIED WITH AN ELECTRIC OPERATED DOOR WITHOUT A LOCK INTERLOCK SWITCH.
 - RAYNOR POWERHOIST BASIC (PHBR) 1/2 H.P., 115 VOLT, SINGLE PHASE
 - RAYNOR POWERHOIST BASIC (PHBR) 1/2 H.P., 115 VOLT, SINGLE PHASE
 - RAYNOR POWERHOIST BASIC (PHBU) 1/2 H.P., 115 VOLT, SINGLE PHASE
 - RAYNOR POWERHOIST BASIC (PHBU) 1/2 H.P., 115 VOLT, SINGLE PHASE
 - RAYNOR POWERHOIST STANDARD (RBU) ____ H.P., ____ VOLT, ____ PHASE
 - RAYNOR POWERHOIST STANDARD (RBUH) ____ H.P., ____ VOLT, ____ PHASE
 - RAYNOR POWERHOIST OPTIMA (RQUH) ____ H.P., ____ VOLT, ____ PHASE
 - WIRING TYPE-SR2 WIRING. MOMENTARY CONTACT OPEN/CLOSE/STOP. SAFETY EDGE TO REVERSE.
 - WIRING TYPE-SPECIAL (NOT AVAILABLE WITH PHBT OPERATORS)
 - SPECIFY SPECIAL WIRING TYPE _____
 - PNEUMATIC SAFETY EDGE TO REVERSE
 - ELECTRIC SAFETY EDGE TO REVERSE
 - THRU-BEAM PHOTO EYES
 - COIL CORD
 - OR CABLE TAKE UP REEL



ANSI/UL325 REQUIRES THE MOTOR OPERATOR BE MOUNTED A MINIMUM OF 8' ABOVE THE FLOOR OR GUARDING OF THE MOTOR OPERATOR TO PREVENT INJURY.(GUARDS BY OTHERS).

RAYNOR DOES NOT RECOMMEND THE USE OF A JACKSHAFT OPERATOR ON DOORS WITH LESS THAN OR EQUAL TO 30"(762MM) OF HEADROOM. RAYNOR RECOMMENDS THE USE OF A TROLLEY TYPE OPERATOR IN THESE SITUATIONS.