

DOOR NUMBER	QTY	OPENING		ACTUAL		MODEL	JAMB		MOUNTING	LOOK	PANEL'S		SECTION NUMBER OPEN FOR GLASS																																											
		WIDTH	HEIGHT	WIDTH	HEIGHT		W	S			M	ANGLE/BKRT	WIDE	HIGH	1	2	3	4	5	6	7	8																																		

JOB: \_\_\_\_\_

DISTR: \_\_\_\_\_

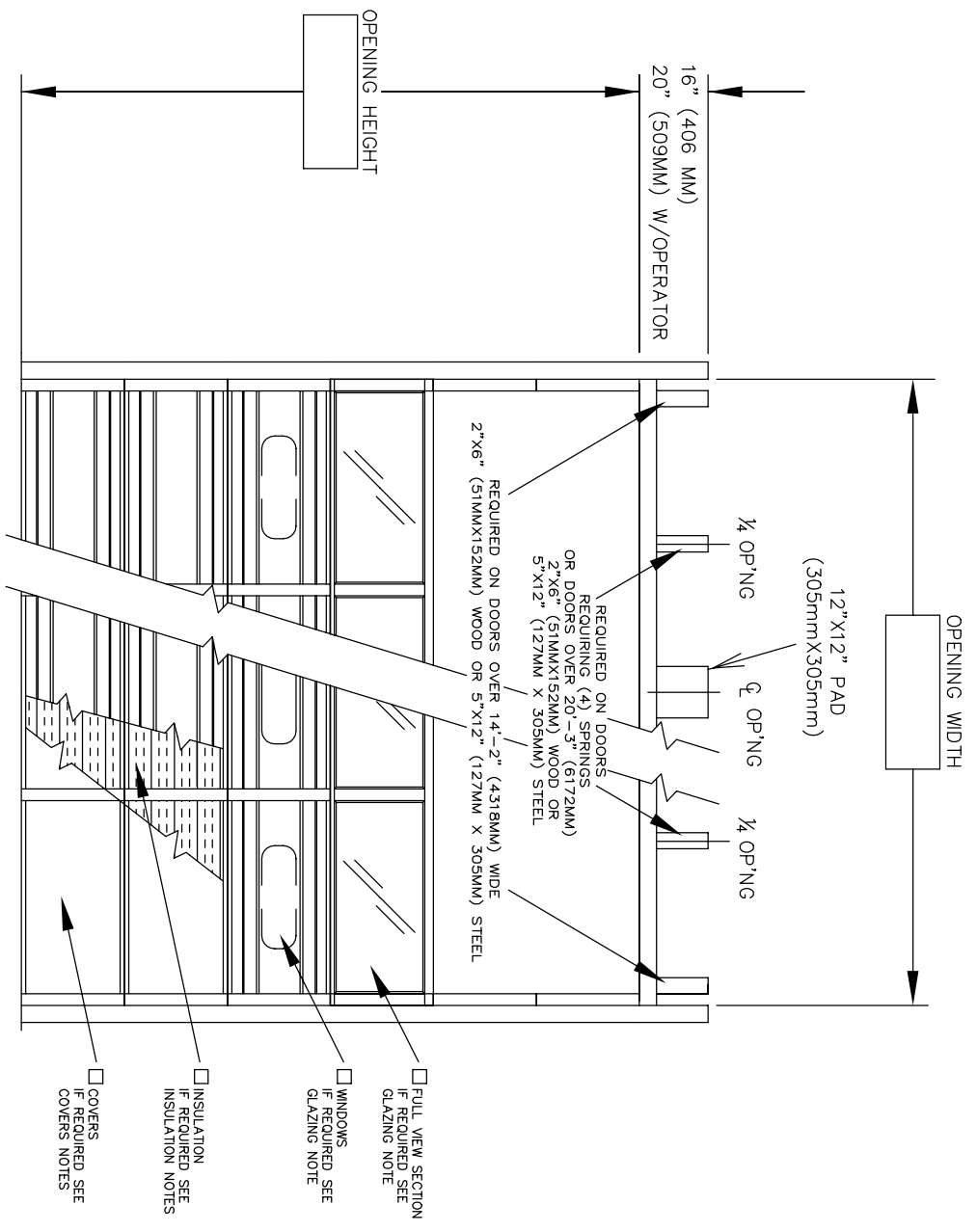
CONTR: \_\_\_\_\_

ARCH: \_\_\_\_\_

NR:2901778

**RAYNOR**

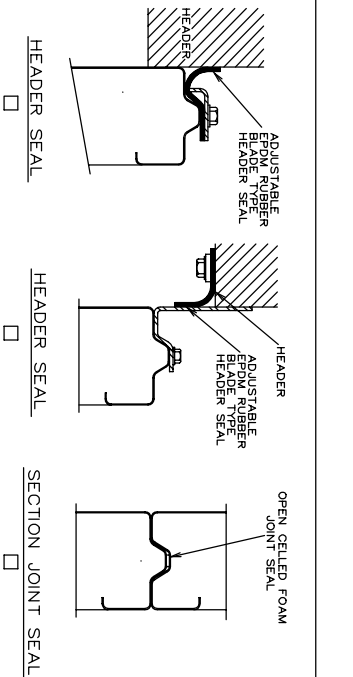
# STEEL FORM STANDARD



- FULL VIEW SECTION IF REQUIRED SEE GLAZING NOTE
- WINDOWS IF REQUIRED SEE GLAZING NOTE
- INSULATION IF REQUIRED SEE INSULATION NOTES
- COVERS IF REQUIRED SEE COVERS NOTES

- 1) DOORS SHALL BE STEEL SECTIONAL OVERHEAD TYPE RAYNOR SERIES \_\_\_\_\_ (S24 OR S20) AS MANUFACTURED BY RAYNOR GARAGE DOOR CO. DOOR SECTIONS - SECTIONS SHALL BE 2" (50.8MM) THICK, ROLLFORMED FORM \_\_\_\_\_ (24 OR 20) GA. COMMERCIAL QUALITY HOT DIPPED GALVANIZED STEEL PER ASTM A-924 AND A-653. SECTIONS TO HAVE A SMOOTH EXTERIOR SURFACE WITH TWO DEEP RIBS AND FOUR PENCIL GROOVES FOR ADDED STRENGTH, ROLLFORMED TONGUE AND GROOVE JOINT BETWEEN SECTIONS FOR WEATHER-TITE CLOSURE. 13 GA. END STILES AND 16 GA. CENTER STILES, RIVETED TO EXTERIOR SURFACE WITH STAINLESS STEEL RIVETS AND RESISTANCE WELDED TO INTERIOR RAIL. SECTION PANEL SEALED AT END STILES WITH 1/4" (6.4MM) THICK POLYETHYLENE FOAM FINISH - DOOR EXTERIOR TO HAVE FINISH COAT OF BAKED ON POLYESTER \_\_\_\_\_ (WHITE, BROWN, OR SEPIA) (BROWN & SEPIA AVAILABLE ON S24 ONLY) OVER AN EPOXY PRIMER. INTERIOR TO HAVE BAKED ON GREY POLYESTER ENAMEL. MAY BE FIELD PAINTED TO MATCH STRUCTURE.

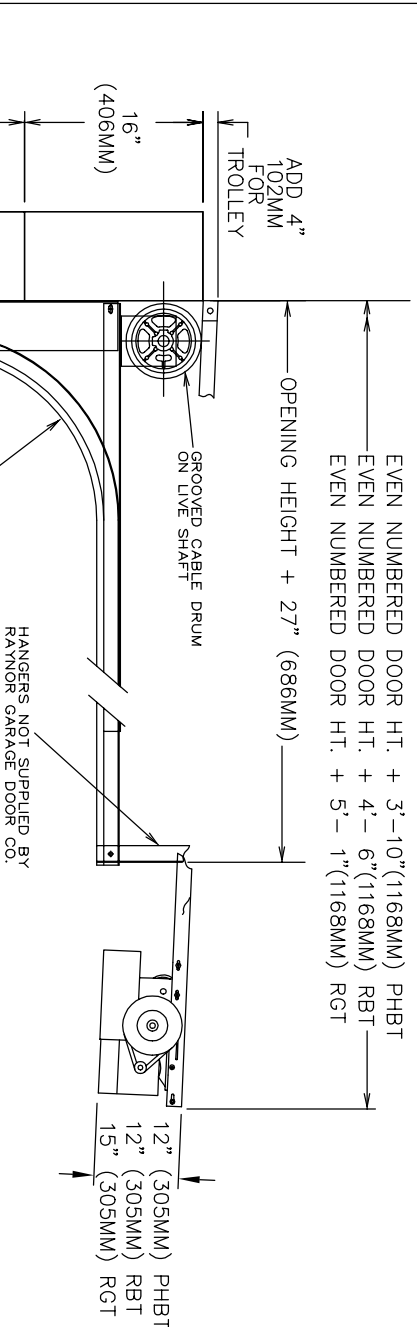
- INSULATION - SECTIONS ARE INSULATED WITH 1 3/8" (34.9mm) THICK RIGID EXPANDED POLYSTYRENE INSULATION WITH FLAME RETARDANT ADDITIVE. INSULATION MEETS UL TEST ASTM-84 WITH MAXIMUM FLAME SPREAD OF 25. "U" VALUE IS 1.30. "R" VALUE IS 7.70.
- INSULATION - SECTIONS ARE INSULATED WITH 1 3/4" (44.5mm) SEMI-RIGID FIBERGLASS. INSULATION MEETS UL TEST ASTM-84 AND FEDERAL SPECIFICATION HH-1-521E TYPE 1. "U" VALUE IS 1.32. "R" VALUE IS 7.57.
- INSULATION - SECTIONS ARE INSULATED WITH 1 3/8" (34.9mm) THICK RIGID EXPANDED POLYSTYRENE INSULATION. MEETS UL723 (ASTM E-84) WITH A MAXIMUM FLAME SPREAD OF 25. INSULATION FAGED WITH QD15 (0.38mm) WHITE HAIRCCELL TEXTURED HIGH-IMPACT POLYSTYRENE. "R" VALUE = 7.70 AND "U" VALUE = 0.130. (COVERS NOT REQUIRED)
- SECTIONS FURNISHED WITH (24, 20) GAUGE WHITE BAKED ON ENAMEL PAINTED COVERS, FITTING BETWEEN VERTICAL MULLIONS AND HORIZONTAL RAILS ON ALL SECTIONS.
- SECTIONS FURNISHED WITH (26, 24, 20) GAUGE GREY BAKED ON ENAMEL PAINTED COVERS FITTING BETWEEN VERTICAL MULLIONS AND HORIZONTAL RAILS ON ALL SECTIONS.
- SECTIONS FURNISHED WITH 1/8" (3.2mm) PRIME PAINTED HARDBOARD COVERS, FITTING BETWEEN VERTICAL MULLIONS AND HORIZONTAL RAILS ON ALL SECTIONS. NOT RECOMMENDED FOR HIGH HUMIDITY APPLICATIONS.
- GLAZED SECTIONS - SECTIONS SHALL BE RAYNOR SERIES "HL" MADE FROM 6063T6 EXTRUDED ALUMINUM STILE AND RAIL CONSTRUCTION. GLASS ENCASED IN SOFT VINYL CHANNELS AND HELD IN PLACE WITH SNAP-IN EXTRUDED ALUMINUM RETAINER.
- FINISH - SECTIONS TO BE ENDURA COATED TO MATCH DOOR SECTIONS FULL VIEW GLAZING (AS SHOWN) - \_\_\_\_\_ (DSB OR DSBT) GLAZING (AS SHOWN) - 24"(610MM)X8"(203MM)X \_\_\_\_\_ (1/8", 1/4", 5/8") RUBBER BY RAYNOR.



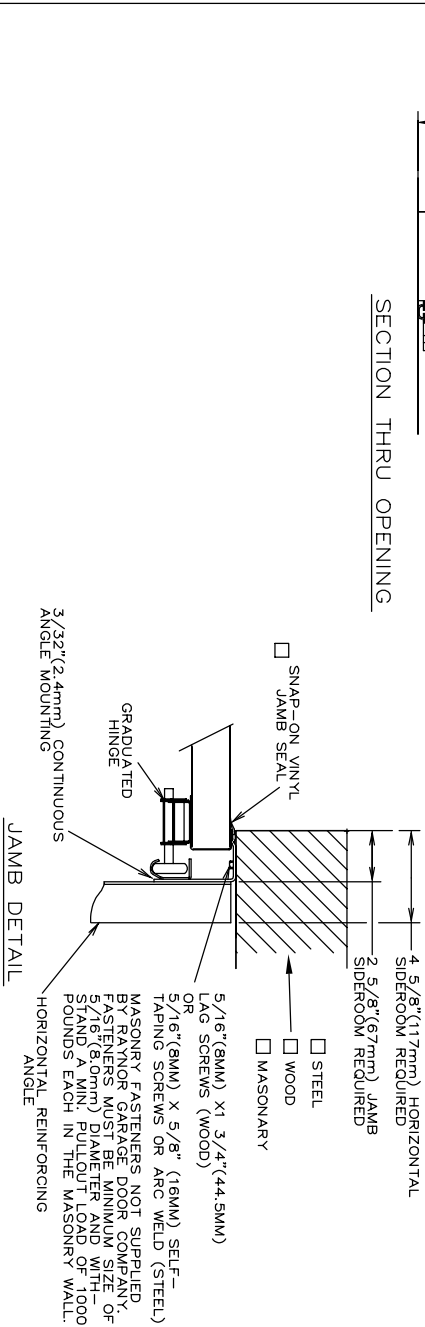
INTERIOR ELEVATION

DOOR NUMBER	QTY	OPENING		ACTUAL		MODEL	JAMB W/S	MOUNTING ANGLE	BRKT	LOCK	PANELS WIDE	PANELS HIGH	SECTION NUMBER OPEN FOR GLASS													
		WIDTH	HEIGHT	WIDTH	HEIGHT								1	2	3	4	5	6	7	8						

JOB: \_\_\_\_\_  
DISTR: \_\_\_\_\_  
CONTR: \_\_\_\_\_  
ARCH: \_\_\_\_\_  
NR:2901778



ANSI/JUL325 REQUIRES THE MOTOR OPERATOR BE MOUNTED A MINIMUM OF 8" ABOVE THE FLOOR OR GUARDING OF THE MOTOR OPERATOR TO PREVENT INJURY. (GUARDS BY OTHERS).



- LOCKING - CREMONE TYPE BOLT ENGAGES SLOT IN TRACK, \_\_\_\_\_ HAND SIDE. FIVE PIN TUMBLER CYLINDER OUTSIDE - NIGHT LATCH INSIDE.
- LOCKING - SPRING LOADED SLIDE BOLT ENGAGES SLOT IN TRACK. OPERABLE FROM INSIDE ONLY - MAY BE MOUNTED EITHER SIDE
- LOCKING - OMIT LOCK.
- LOCKS SHOULD NOT BE SUPPLIED WITH AN ELECTRIC OPERATED DOOR WITHOUT A LOCK INTERLOCK SWITCH.
  - RAYNOR POWERHOIST BASIC (PHBT) 1/2 H.P., 115 VOLT, SINGLE PHASE
  - RAYNOR POWERHOIST STANDARD (RBT) \_\_\_\_ H.P., \_\_\_\_ VOLT, \_\_\_\_ PHASE
  - RAYNOR POWERHOIST OPTIMA (RGT) \_\_\_\_ H.P., \_\_\_\_ VOLT, \_\_\_\_ PHASE
  - WIRING TYPE-SR2 WIRING, MOMENTARY CONTACT OPEN/CLOSE/STOP, SAFETY EDGE TO REVERSE.
  - WIRING TYPE-SPECIAL (NOT AVAILABLE WITH PHBT OPERATORS) SPECIFY SPECIAL WIRING TYPE \_\_\_\_\_
  - PNEUMATIC SAFETY EDGE TO REVERSE  COIL CORD
  - ELECTRIC SAFETY EDGE TO REVERSE  CABLE TAKE UP REEL
  - THRU-BEAM PHOTO EYES