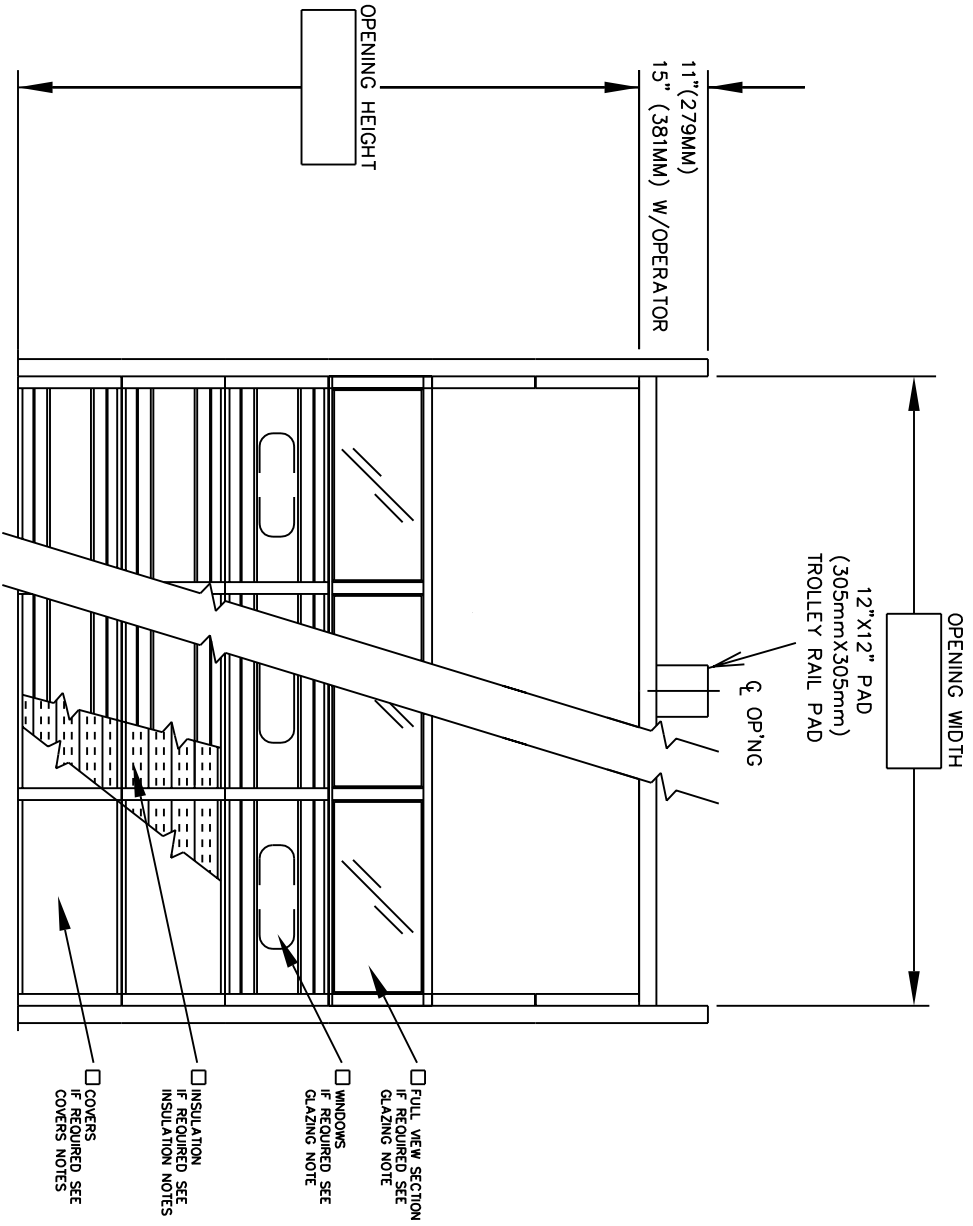


DOOR NUMBER	QTY	OPENING		ACTUAL		MODEL	JAMB	MOUNTING	LOOK	PANELS		SECTION NUMBER	OPEN	FOR GLASS
		WIDTH	HEIGHT	WIDTH	HEIGHT					W	S			

STEEL FORM BASIC



INTERIOR ELEVATION

JOB:	
DISTR:	
CONTR:	
ARCH:	
NR:2902519	

1) DOORS SHALL BE STEEL SECTIONAL OVERHEAD TYPE RAYNOR SERIES S-24C (NOMINAL 24 GAUGE) AS MANUFACTURED BY RAYNOR GARAGE DOOR CO. SECTIONS SHALL BE 2" (50.8mm) THICK, ROLLED FROM COMMERCIAL QUALITY HOT-DIPPED GALVANIZED STEEL PER ASTM A-924 AND A-653. SECTIONS SHALL BE 16" (406.4mm) DEEP WITH TWO DEEP RIBS FOR A SMOOTH EXTERIOR SURFACE AND ONE DEEP RIB FOR A SMOOTH INTERIOR SURFACE. THE DOORS SHALL BE 16 GAUGE END STILES AND 16 GAUGE CENTER STILES AND RESISTANCE WELDED TO INTERIOR RAIL. SECTION PANEL SEALED AT END STILES WITH 1/4" (6.4mm) THICK POLYETHYLENE FOAM.

FINISH- DOOR EXTERIOR TO HAVE FINISH COAT OF BAKED ON POLYESTER ENAMEL OVERSTEEL. INTERIOR TO HAVE BAKED ON GRAY ENAMEL OVERSTEEL. ENAMEL TO BE PAINTED TO MATCH STRUCTURE.

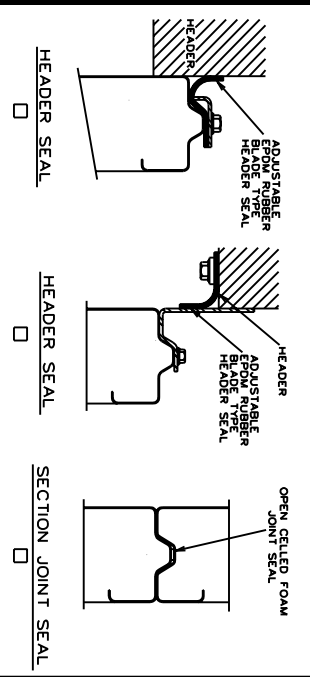
- INSULATION- SECTIONS ARE INSULATED WITH 1 3/8" (34.9mm) THICK RIGID EXPANDED POLYSTYRENE INSULATION WITH FLAME RETARDANT ADDITIVE. INSULATION MEETS UL TEST (ASTM-84) VALUE IS 7.70.
- INSULATION- SECTIONS ARE INSULATED WITH 1 3/4" (44.5mm) SEMI-RIGID FIBERGLASS. INSULATION MEETS UL TEST (ASTM-84 AND FEDERAL SPECIFICATION HH-1-52) TYPE I, U VALUE IS 1.32.
- INSULATION- SECTIONS ARE INSULATED WITH 1 3/8" (34.9mm) THICK RIGID EXPANDED POLYSTYRENE INSULATION. MEETS UL723 (ASTM-84) WITH A MAXIMUM FLAME SPREAD OF 25. INSULATION FACED WITH 0.015" (0.38mm) WHITE HARCELL TEXTURED HIGH-IMPACT POLYSTYRENE. R-VALUE= 7.70 AND U-VALUE= 0.130. (COVERS NOT REQUIRED)
- SECTIONS FURNISHED WITH (24, 20) GAUGE WHITE BAKED ON ENAMEL PAINTED COVERS, FITTING BETWEEN VERTICAL MULLIONS AND HORIZONTAL RAILS ON ALL SECTIONS.
- SECTIONS FURNISHED WITH (26, 24, 20) GAUGE GREY BAKED ON ENAMEL PAINTED COVERS, FITTING BETWEEN VERTICAL MULLIONS AND HORIZONTAL RAILS ON ALL SECTIONS.
- SECTIONS FURNISHED WITH (26, 24, 20) GAUGE GREY BAKED ON ENAMEL PAINTED COVERS, FITTING BETWEEN VERTICAL MULLIONS AND HORIZONTAL RAILS ON ALL SECTIONS.
- GLAZED SECTIONS- SECTIONS SHALL BE RAYNOR SERIES "H-L" MADE FROM 6063T6 EXTRUDED ALUMINUM STILE AND RAIL CONSTRUCTION. GLASS ENCASED IN SOFT VINYL CHANNELS AND HELD IN PLACE WITH SNAP-IN EXTRUDED ALUMINUM RETAINER.
- FINISH- SECTIONS TO BE ENDURA COATED TO MATCH DOOR SECTIONS FULL VIEW GLAZING (AS SHOWN)- (DSB OR DSBT)
- GLAZING (AS SHOWN)- 24"(610MM)x8"(203MM)x (1/8", 1/4", 5/8") RUBBER BY RAYNOR.

FULL VIEW SECTION IF REQUIRED SEE GLAZING NOTE


WINDOWS IF REQUIRED SEE GLAZING NOTE

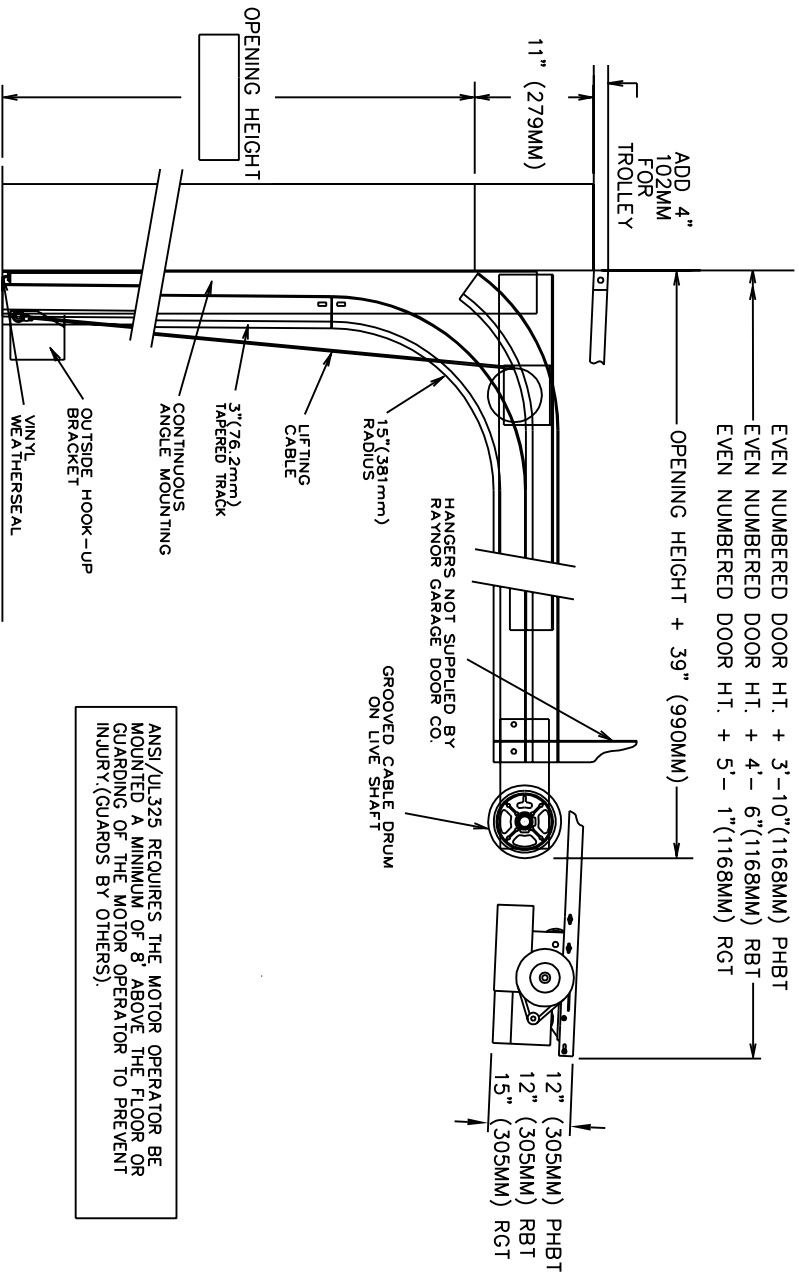
INSULATION IF REQUIRED SEE INSULATION NOTES

COVERS IF REQUIRED SEE COVERS NOTES

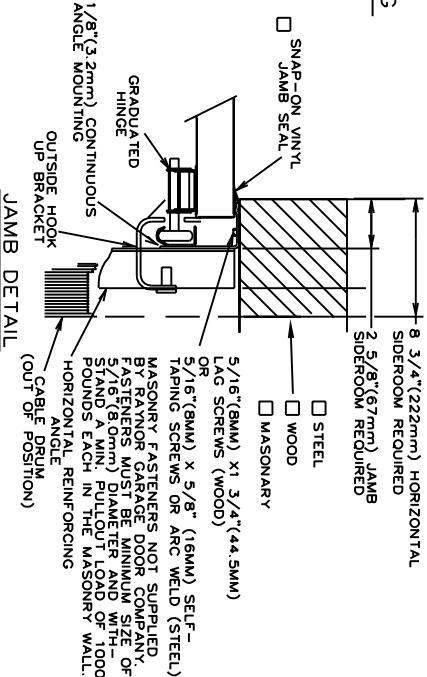


DOOR NUMBER	QTY	OPENING		ACTUAL		MODEL	JAMB MOUNTING			LOCK	PANELS		SECTION NUMBER OPEN FOR GLASS																																		
		WIDTH	HEIGHT	WIDTH	HEIGHT		W	S	M		ANGLE	BKRT	LOW	HIGH	1	2	3	4	5	6	7	8																									

JOB:	
DISTR:	
CONTR:	
ARCH:	NR:2902519



ANSI/JL325 REQUIRES THE MOTOR OPERATOR BE MOUNTED A MINIMUM OF 8' ABOVE THE FLOOR OR GUARDING OF THE MOTOR OPERATOR TO PREVENT INJURY (GUARDS BY OTHERS).



- TRACKS - 3" (76.2mm) HOT-DIPPED GALVANIZED TRACK PER ASTM A-653 TO BE CONTINUOUS UNINTERRUPTED. SIDE RAIL AND FASTENING SHALL BE CONTINUOUS UNINTERRUPTED. HORIZONTAL TRACK TO BE 3-1/2"x6"X1/8" (88.9mmX152mmX3.2mm) TO BE ADEQUATELY REINFORCED WITH CONTINUOUS ANGLE.
- HARDWARE - HINGES AND BRACKETS MADE FROM GALVANIZED STEEL. TRACK ROLLERS SHALL BE TEN 5/16" (.9mm) DIAMETER HANDHELD STEEL BALLS PER ROLLER.
- SPRING COUNTERBALANCE - HEAVY DUTY OIL-TEMPERED WIRE TORSION SPRINGS ON A CONTINUOUS BALL BEARING CROSS-HEADER SHAFT GALVANIZED AIRCRAFT TYPE LIFTING CABLES WITH MIN. SAFETY FACTOR OF 5 TO 1.
- LOCKING - CREWONE TYPE BOLT ENGAGES SLOT IN TRACK, ----- HAND SIDE. FIVE PIN TUMBLER CYLINDER OUTSIDE - NIGHT LATCH INSIDE.
- LOCKING - SPRING LOADED SLIDE BOLT ENGAGES SLOT IN TRACK.
- OPERABLE FROM INSIDE ONLY - MAY BE MOUNTED EITHER SIDE.
- LOCKING - OMIT LOCK.
- LOCKS SHOULD NOT BE SUPPLIED WITH AN ELECTRIC OPERATED DOOR WITHOUT A LOCK INTERLOCK SWITCH.
- RAYNOR POWERHOIST BASIC (PHBT) 1/2 H.P., 115 VOLT, SINGLE PHASE
- RAYNOR POWERHOIST STANDARD (RBT) ----- H.P., ----- VOLT, ----- PHASE
- RAYNOR POWERHOIST OPTIMA (RGT) --- H.P., --- VOLT, --- PHASE
- WIRING TYPE-SR2 WIRING, MOMENTARY CONTACT OPEN/CLOSE/STOP, SAFETY EDGE TO REVERSE.
- WIRING TYPE-SPECIAL (NOT AVAILABLE WITH PHBT OPERATORS)
- SPECIFY SPECIAL WIRING TYPE -----
- PNEUMATIC SAFETY EDGE TO REVERSE
- ELECTRICAL SAFETY EDGE TO REVERSE
- THRU-BEAM PHOTO EYES
- COIL CORD OR CABLE TAKE UP REEL