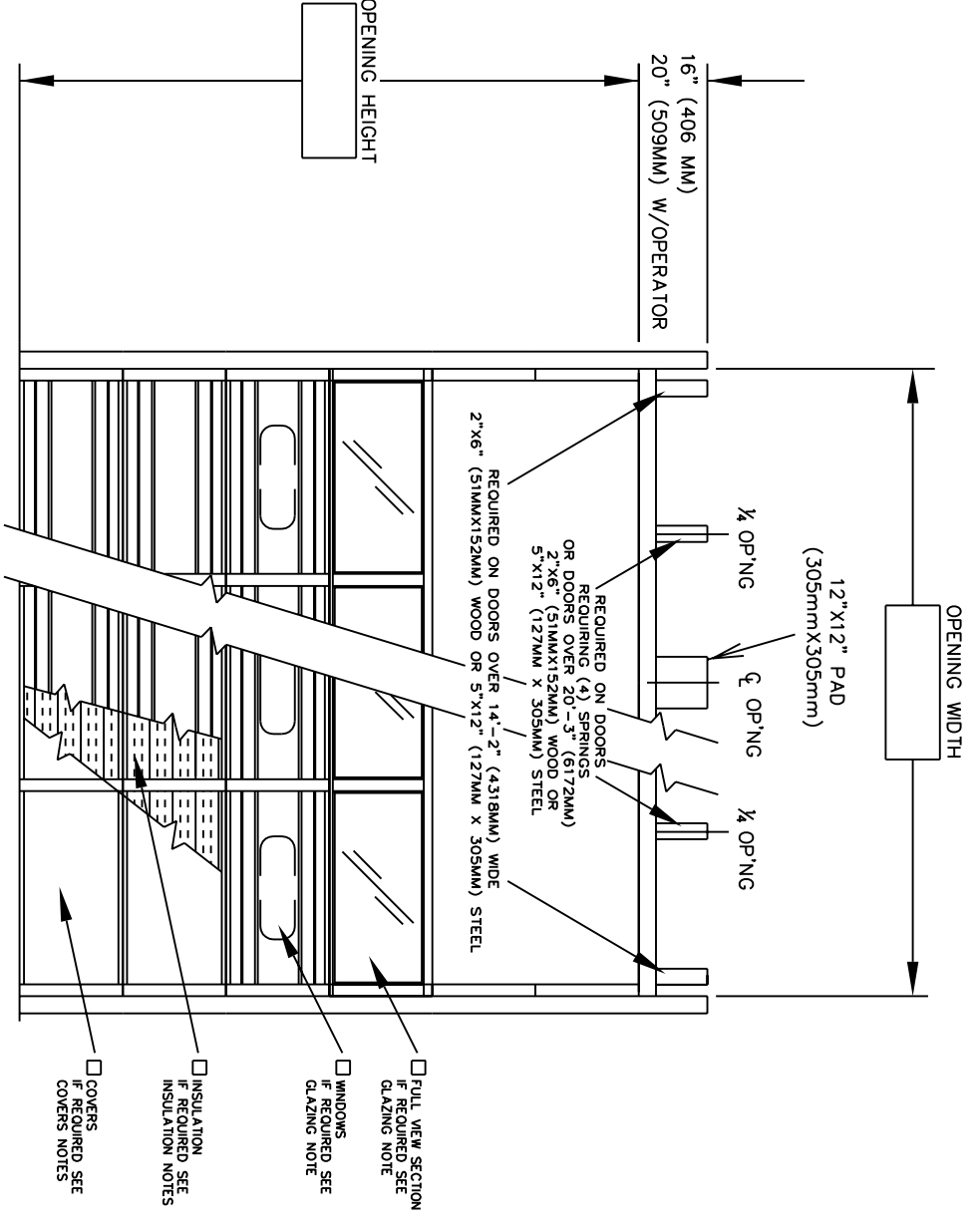


DOOR NUMBER	QTY	OPENING WIDTH	OPENING HEIGHT	ACTUAL WIDTH	ACTUAL HEIGHT	MODEL	JAMB	MOUNTING	LOOK	PANELS	PANELS	SECTION NUMBER OPEN FOR GLASS								
						W S M	ANGLE	BKRT		WIDE	HIGH	1	2	3	4	5	6	7	8	

STEEL FORM BASIC



INTERIOR ELEVATION

**RAYNOR**

NR:2902510

ARCH: \_\_\_\_\_

CONTR: \_\_\_\_\_

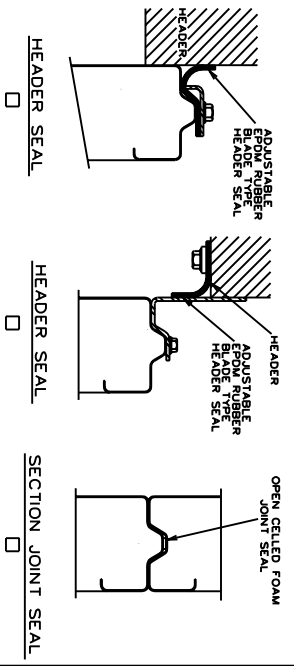
DISTR: \_\_\_\_\_

JOB: \_\_\_\_\_

1) DOORS SHALL BE STEEL SECTIONAL OVERHEAD TYPE RAYNOR SERIES "S"-24" (NOMINAL 24 GAUGE) AS MANUFACTURED BY RAYNOR GARAGE DOOR CO. SECTIONS SHALL BE 2" (50.8mm) THICK, ROLL-FORMED FROM COMMERCIAL QUALITY HOT-DIPPED GALVANIZED STEEL PER ASTM A-924 AND A-653. SECTIONS SHALL BE A SMOOTH EXTERIOR SURFACE WITH TWO DEEP GROOVES FOR JOINING SECTIONS FOR WEATHER-TIGHT JOINTS. JOINTS BETWEEN SECTIONS SHALL BE SEALED WITH POLYURETHANE 16 GAUGE END STILES AND 16 GAUGE CENTER STILES. RIVETED TO EXTERIOR SURFACE WITH STAINLESS STEEL STILES, AND RESISTANCE WELDED TO INTERIOR RAIL. SECTION PANEL SEALED AT END STILES WITH 1/4" (6.4mm) THICK POLYETHYLENE FOAM.

FINISH- DOOR EXTERIOR TO HAVE FINISH COAT OF BAKED ON POLYURETHANE ENAMEL OVERSTEEL PRIMER. INTERIOR TO HAVE BAKED ON GRAY ENAMEL OVERSTEEL PRIMER. TO BE PAINTED TO MATCH STRUCTURE.

- INSULATION- SECTIONS ARE INSULATED WITH 1 3/8" (34.9mm) THICK RIGID EXPANDED POLYSTYRENE INSULATION WITH FLAME RETARDANT ADDITIVE. INSULATION MEETS UL TEST (ASTM-84) WITH 0.15" (3.8mm) FLAME SPREAD R- VALUE IS 7.90.
- INSULATION- SECTIONS ARE INSULATED WITH 1 3/4" (44.5mm) SEMI-RIGID FIBERGLASS. INSULATION MEETS UL TEST (ASTM- 84 AND FEDERAL SPECIFICATION HH-1-521E TYPE I, U TEST VALUE IS 7.57).
- INSULATION- SECTIONS ARE INSULATED WITH 1 3/8" (34.9mm) THICK RIGID EXPANDED POLYSTYRENE INSULATION. MEETS UL723 (ASTM-84) WITH A MAXIMUM FLAME SPREAD OF 25. INSULATION FACED WITH 0.015" (0.38mm) WHITE HARCCELL TEXTURED HIGH-IMPACT POLYSTYRENE. R-VALUE= 7.70AND U-VALUE= 0.130. (COVERS NOT REQUIRED)
- SECTIONS FURNISHED WITH BAKED ON ENAMEL PAINTED COVERS, FITTING BETWEEN MULLIONS AND HORIZONTAL RAILS ON ALL SECTIONS.
- SECTIONS FURNISHED WITH 26, 24, 20 GAUGE GREY BAKED ON HORIZONTAL RAILS ON ALL SECTIONS.
- SECTIONS FURNISHED WITH FITTING BETWEEN VERTICAL MULLIONS AND HORIZONTAL RAILS ON ALL SECTIONS.
- SECTIONS FINISHED WITH 1/8" (3.2mm) PRIME PAINTED HARDBOARD COVERS. FITTING BETWEEN VERTICAL MULLIONS AND HORIZONTAL RAILS ON ALL SECTIONS. NOT RECOMMENDED FOR HIGH HUMIDITY APPLICATIONS.
- GLAZED SECTIONS- SECTIONS SHALL BE RAYNOR SERIES "LH" MADE FROM 6063T6 EXTRUDED ALUMINUM STILE AND RAIL CONSTRUCTION. GLASS ENCASED IN SOFT VINYL CHANNELS AND HELD IN PLACE WITH SNAP-IN EXTRUDED ALUMINUM RETAINER.
- FINISH- SECTIONS TO BE ENDURA COATED TO MATCH DOOR SECTIONS FULL VIEW GLAZING (AS SHOWN)- (DSB OR DSBT)
- GLAZING (AS SHOWN)- 24"(610MM)x8"(203MM)x (1/8", 1/4", 5/8") RUBBER BY RAYNOR.



- FULL VIEW SECTION IF REQUIRED SEE GLAZING NOTE
- WINDOWS IF REQUIRED SEE GLAZING NOTE
- INSULATION IF REQUIRED SEE INSULATION NOTES
- COVERS IF REQUIRED SEE COVERS NOTES

DOOR NUMBER	QTY	WIDTH	OPENING		ACTUAL		MODEL	JAMB MOUNTING		LOCK	PANELS WIDE	PANELS HIGH	SECTION NUMBER OPEN FOR GLASS																										
			HEIGHT	WIDTH	HEIGHT	WIDTH		W	S				1	2	3	4	5	6	7	8																			

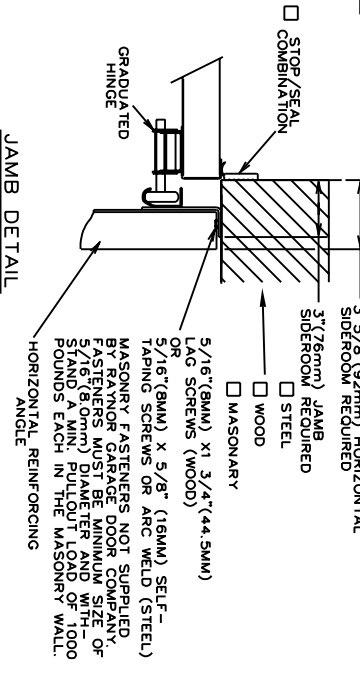
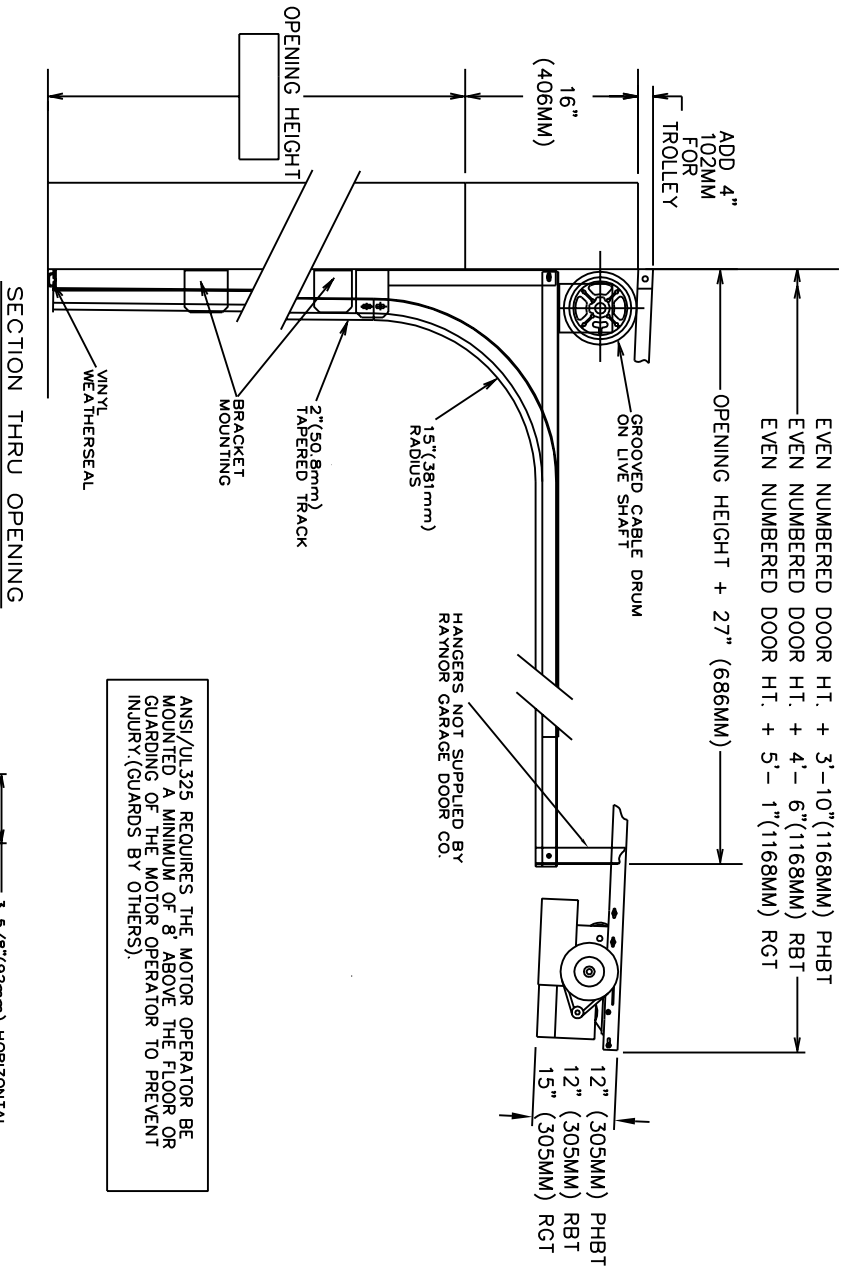
JOB: \_\_\_\_\_

DISTR: \_\_\_\_\_

CONTR: \_\_\_\_\_

ARCH: \_\_\_\_\_

NR:2902510



ANSI/UL325 REQUIRES THE MOTOR OPERATOR BE MOUNTED A MINIMUM OF 8' ABOVE THE FLOOR OR GUARDING OF THE MOTOR OPERATOR TO PREVENT INJURY (GUARDS BY OTHERS).

- TRACKS - 2" (50.8mm) HOT-DIPPED GALVANIZED TRACK PER ASTM A-653. TRACK FASTENERS MUST BE RIVETED TO JAMB AND TO JAMB HORIZONTAL TRACK TO BE ADEQUATELY REINFORCED WITH CONTINUOUS ANGLE.
- HARDWARE - HINGES AND BRACKETS MADE FROM GALVANIZED STEEL. TRACK ROLLERS SHALL HAVE TEN 1/4" (6.4mm) DIAMETER HARDENED STEEL BALLS PER ROLLER.
- SPRING COUNTERBALANCE - HEAVY DUTY OIL-TEMPERED WIRE TORSION SPRINGS ON A CONTINUOUS BALL BEARING CROSS-HEADER SHAFT GALVANIZED AIRCRAFT TYPE LIFTING CABLES WITH MIN. SAFETY FACTOR OF 5 TO 1.
- LOCKING - CREMONE TYPE BOLT ENGAGES SLOT IN TRACK, \_\_\_\_\_ HAND SIDE. FIVE PIN TUMBLER CYLINDER OUTSIDE - NIGHT LATCH INSIDE.
- LOCKING - SPRING LOADED SLIDE BOLT ENGAGES SLOT IN TRACK.
- OPERABLE FROM INSIDE ONLY - MAY BE MOUNTED EITHER SIDE
- LOCKING - OMIT LOCK.
- LOCKS SHOULD NOT BE SUPPLIED WITH AN ELECTRIC OPERATED DOOR WITHOUT A LOCK INTERLOCK SWITCH.
- RAYNOR POWERHOIST BASIC (PHBT) 1/2 H.P., 115 VOLT, SINGLE PHASE
- RAYNOR POWERHOIST STANDARD (RBT) \_\_\_\_\_ H.P., \_\_\_\_\_ VOLT, \_\_\_\_\_ PHASE
- RAYNOR POWERHOIST OPTIMA (RGT) \_\_\_\_\_ H.P., \_\_\_\_\_ VOLT, \_\_\_\_\_ PHASE
- WIRING TYPE-SR2 WIRING. MOMENTARY CONTACT OPEN/CLOSE/STOP. SAFETY EDGE TO REVERSE.
- WIRING TYPE-SPECIAL (NOT AVAILABLE WITH PHBT OPERATORS)
- SPECIFY SPECIAL WIRING TYPE \_\_\_\_\_
- PNEUMATIC SAFETY EDGE TO REVERSE  COIL CORD
- ELECTRIC SAFETY EDGE TO REVERSE  CABLE TAKE UP REEL
- THRU-BEAM PHOTO EYES